

# CortandoeCosturando.com

## Cache-Coeur

### Tamanhos 48 e 50

48 riscado com \_\_\_\_\_ em preto

50 riscado com \_ \_ \_ \_ \_ em azul

Medidas Tomadas como referência:

### Manequim 48

Busto.....106  
Cintura..... 90  
Quadril.....112  
Altura do Busto.....28,5  
Comprimento Costa.....45

### Manequim 50

Busto.....110  
Cintura.....94  
Quadril.....116  
Altura do Busto.....29,5  
Comprimento Costa.....46

### Sugestão de Tecido

2,50m de palha de Seda.

# CortandoeCosturando.com

## Peças do Molde

**Frente** - Cortar 1 vez no tecido dobrado.

**Costas** - Cortar uma vez no tecido dobrado.

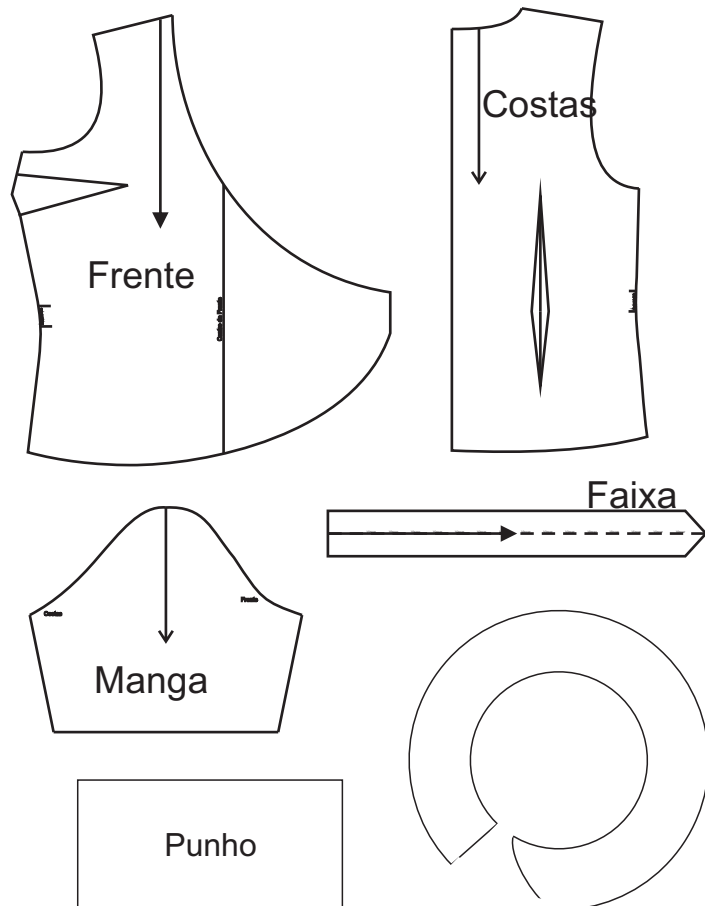
**Manga** - Cortar uma vez no Tecido dobrado

**Punho** - Cortar uma vez no tecido dobrado.

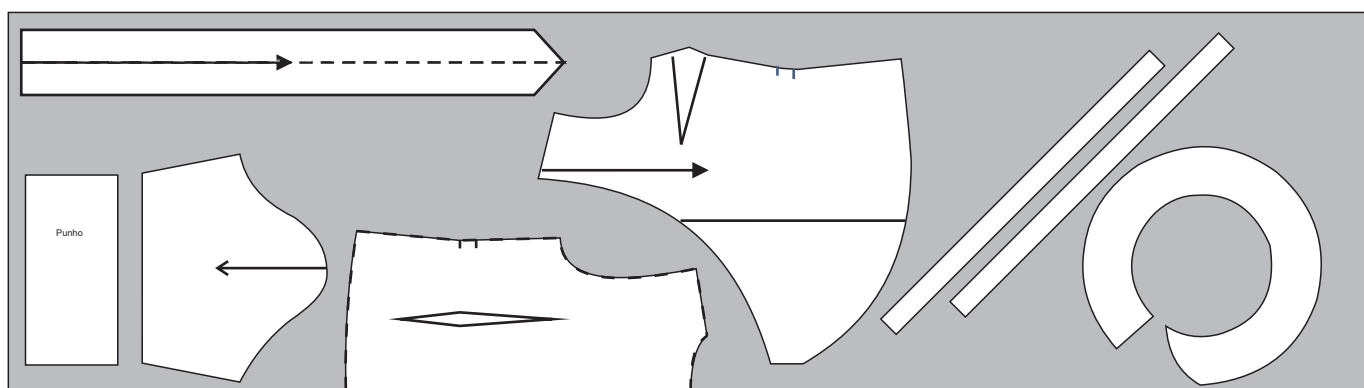
**Faixa** - Duas tiras de 1m com 12cm de altura.

**Acabamento do Decote** - Duas tiras de viés de 70cm cada.

**Jabô ( Frente e Costas)** - Cortar uma vez.

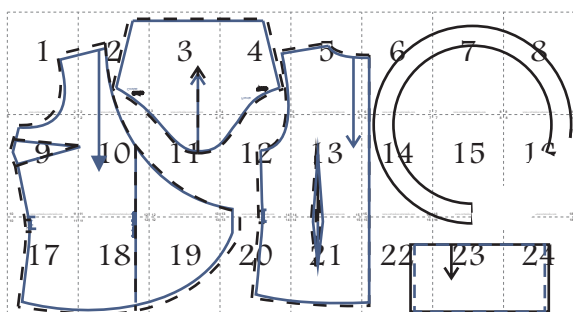


## Plano de Corte



## Grade Completa

Imprimir e colar conforme orientações para Moldes Online.

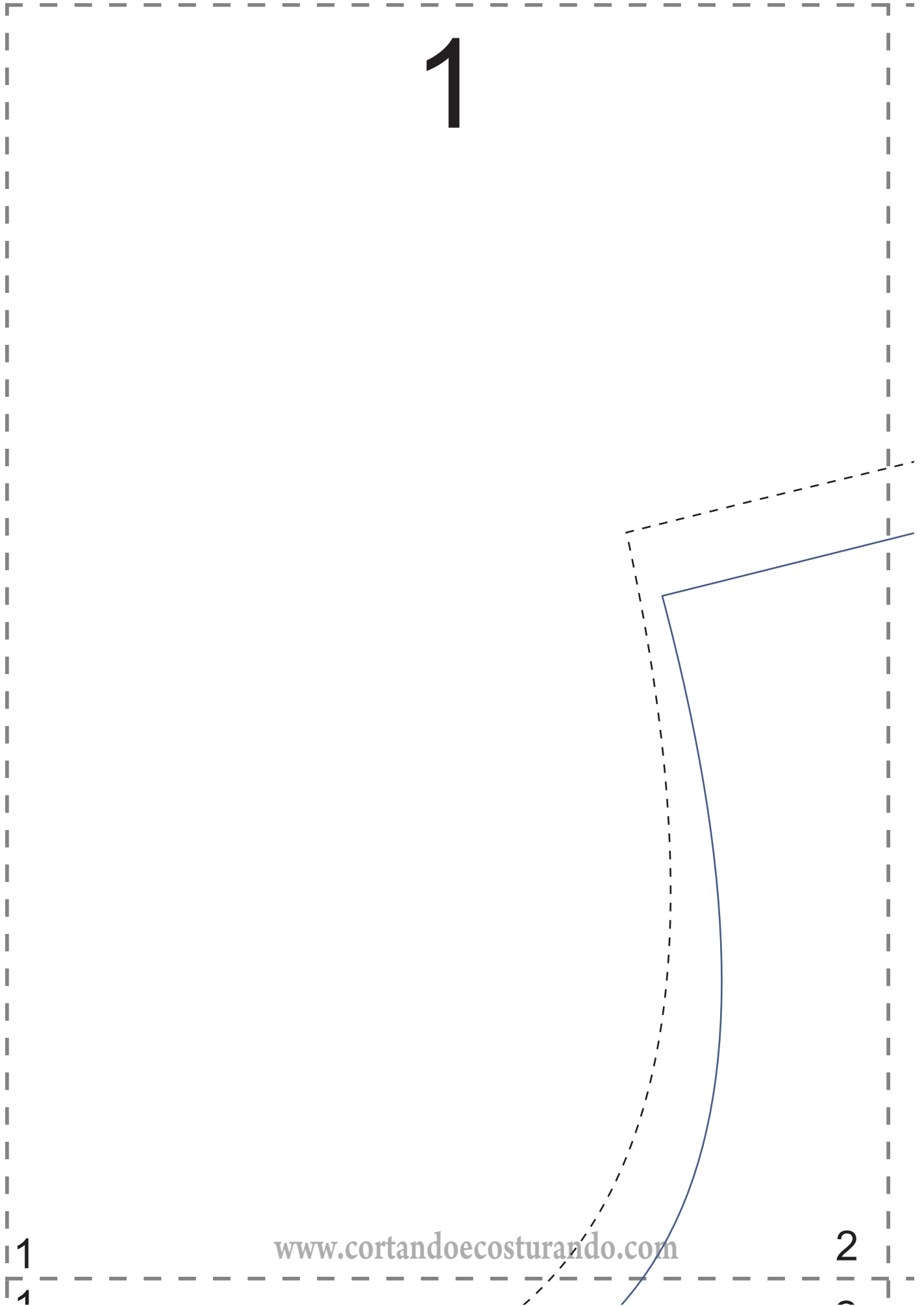


1

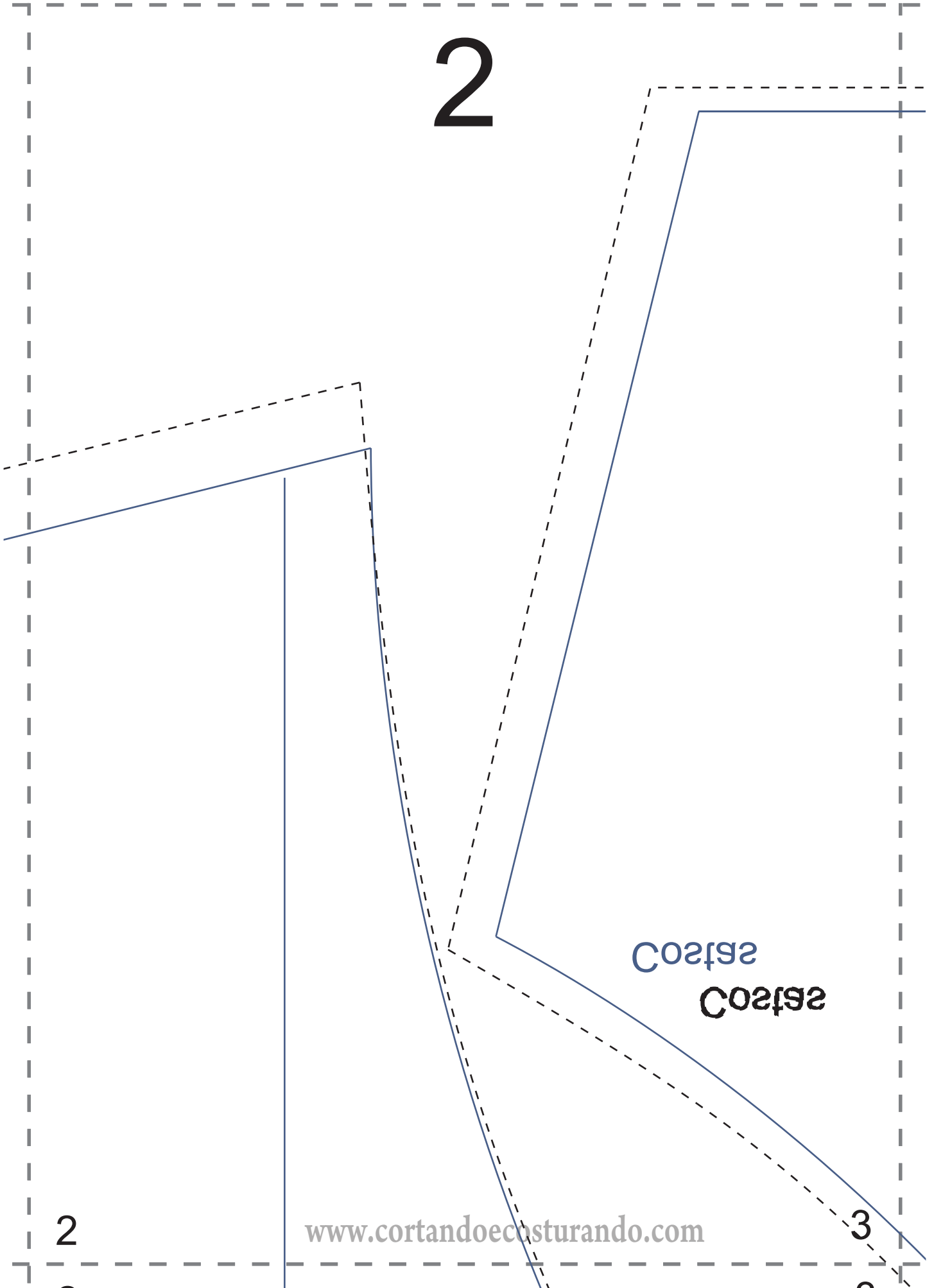
1

[www.cortandoeocosturando.com](http://www.cortandoeocosturando.com)

2



2



Costas  
Costas

2

[www.cortandocosturando.com](http://www.cortandocosturando.com)

3

3

3

4



4

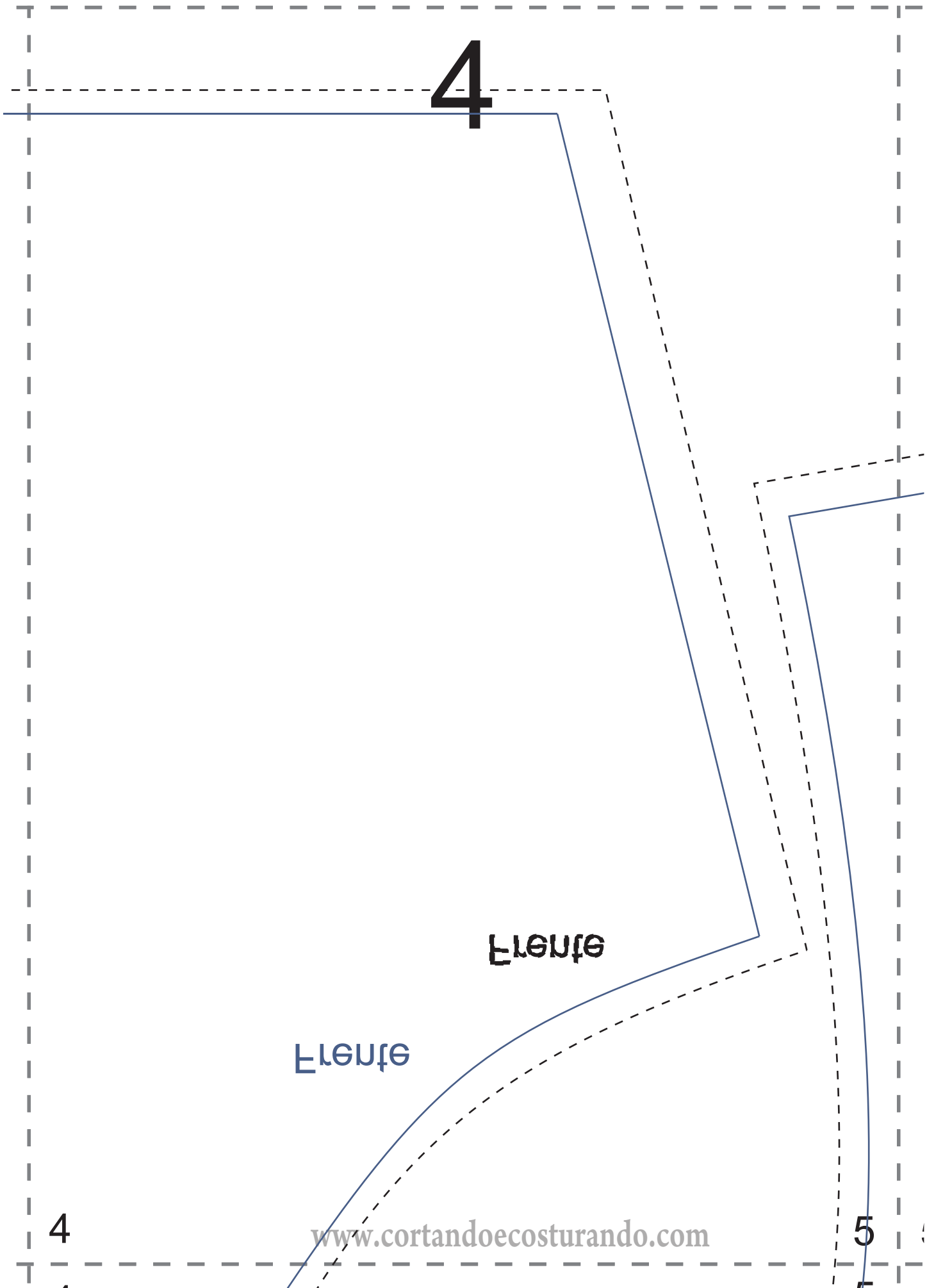
4cm

4cm

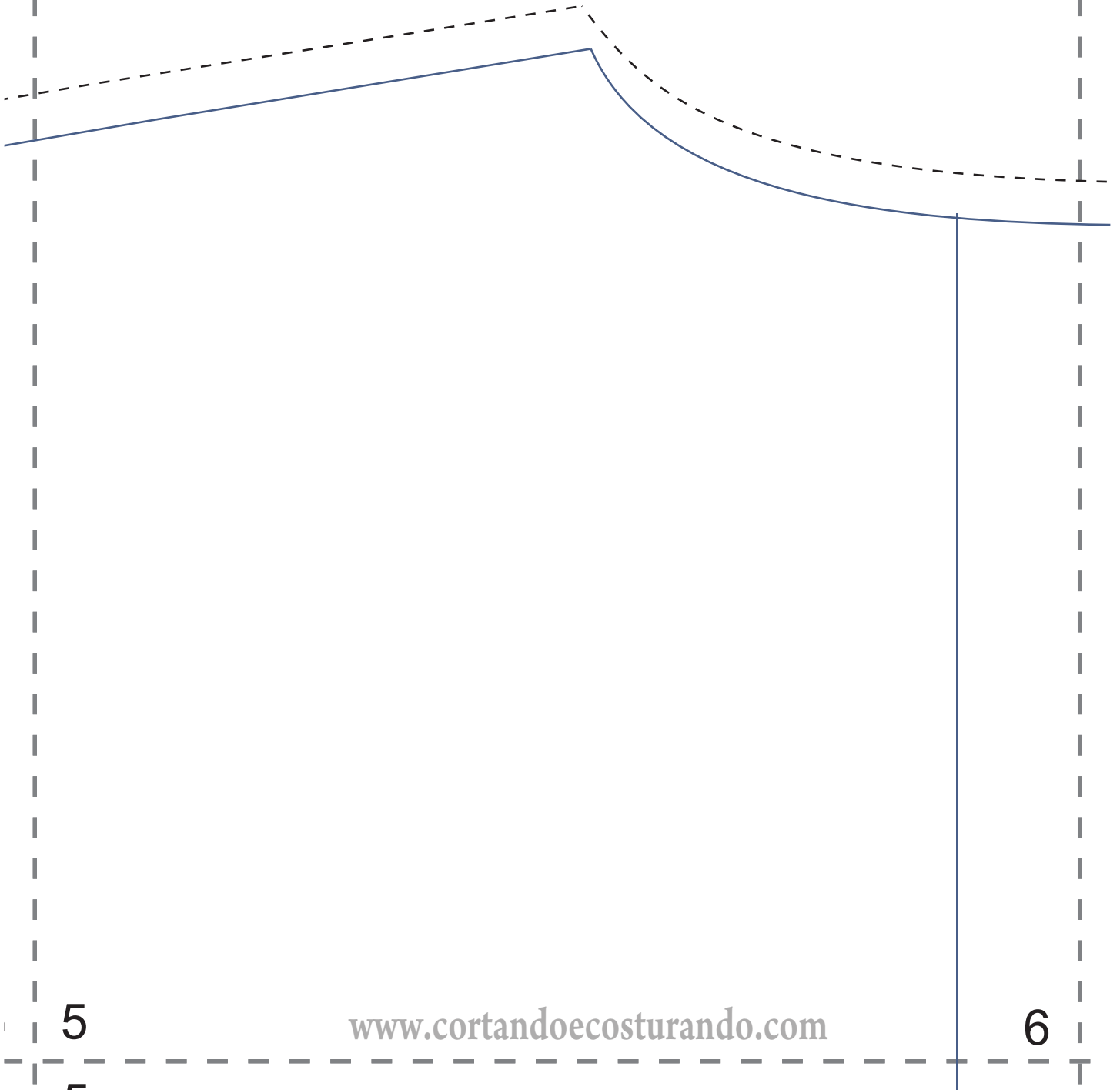
4

5

[www.cortandoecosturando.com](http://www.cortandoecosturando.com)



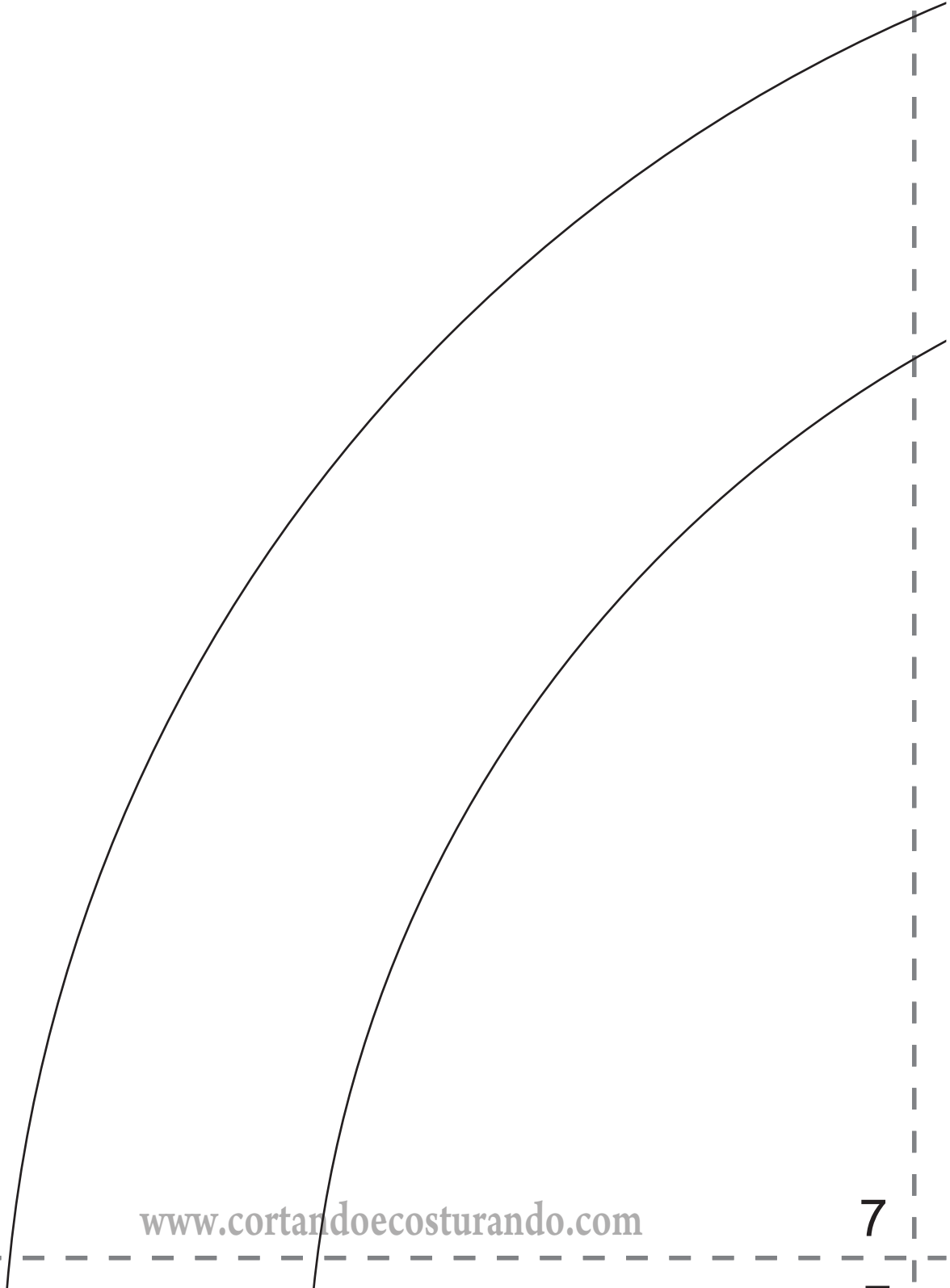
5



5

6

6



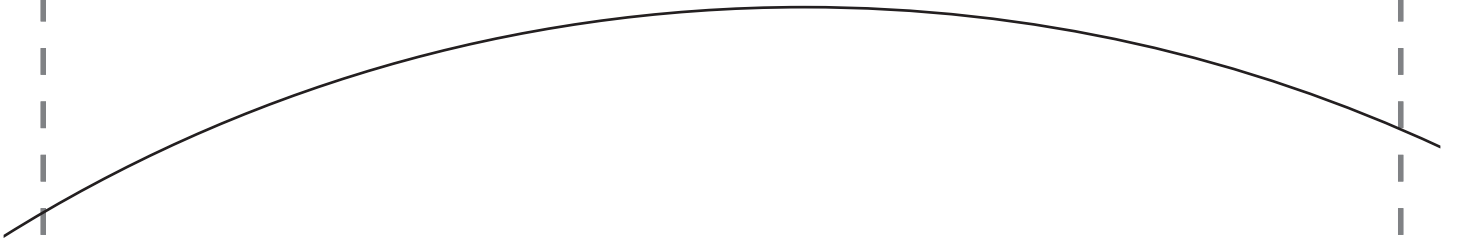
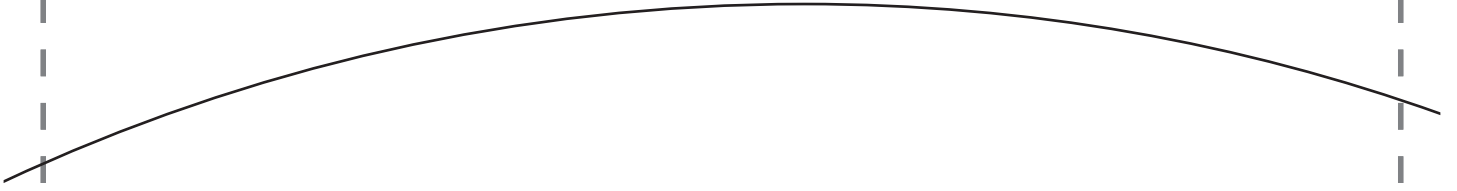
6

[www.cortandoecosturando.com](http://www.cortandoecosturando.com)

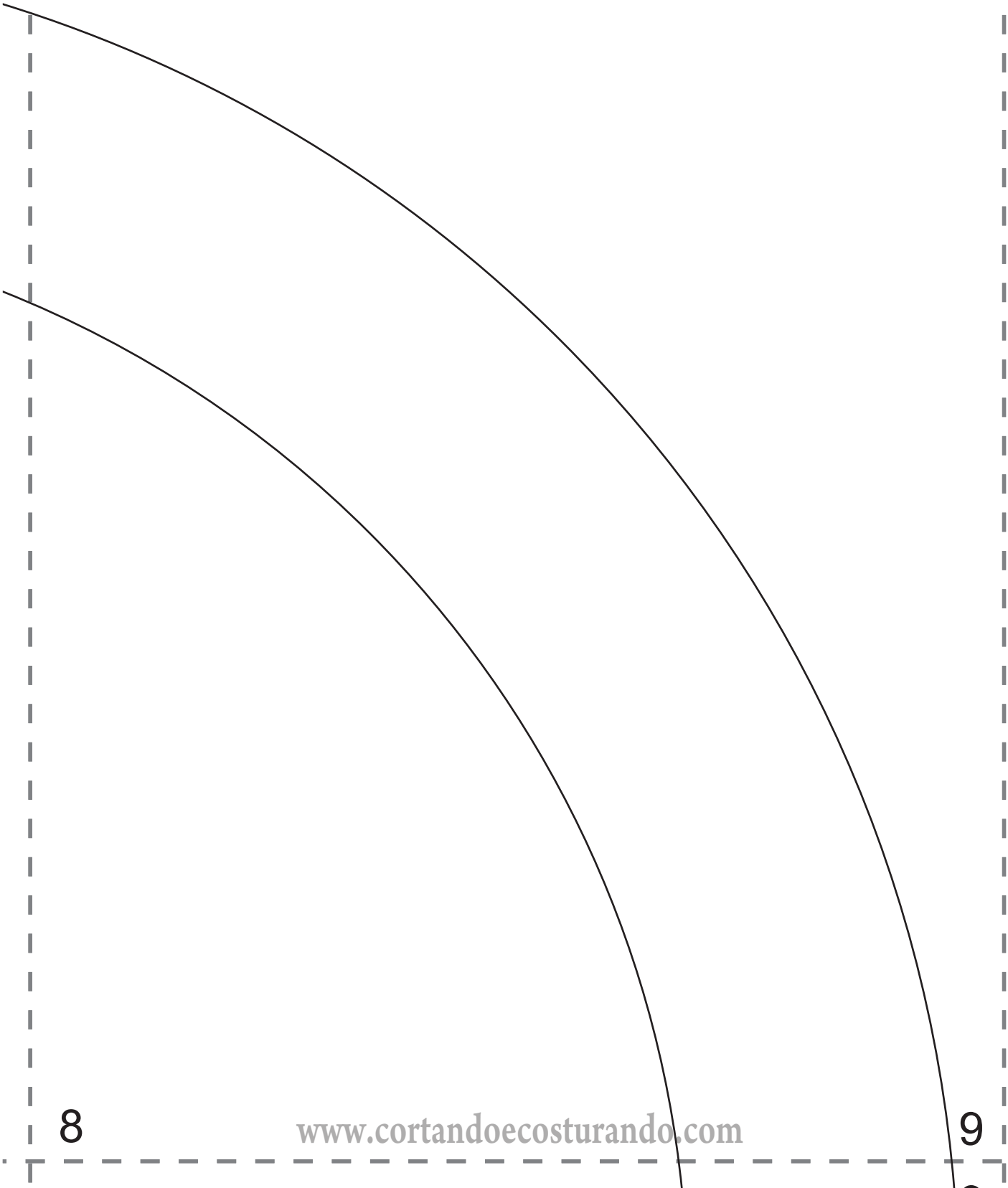
7



7



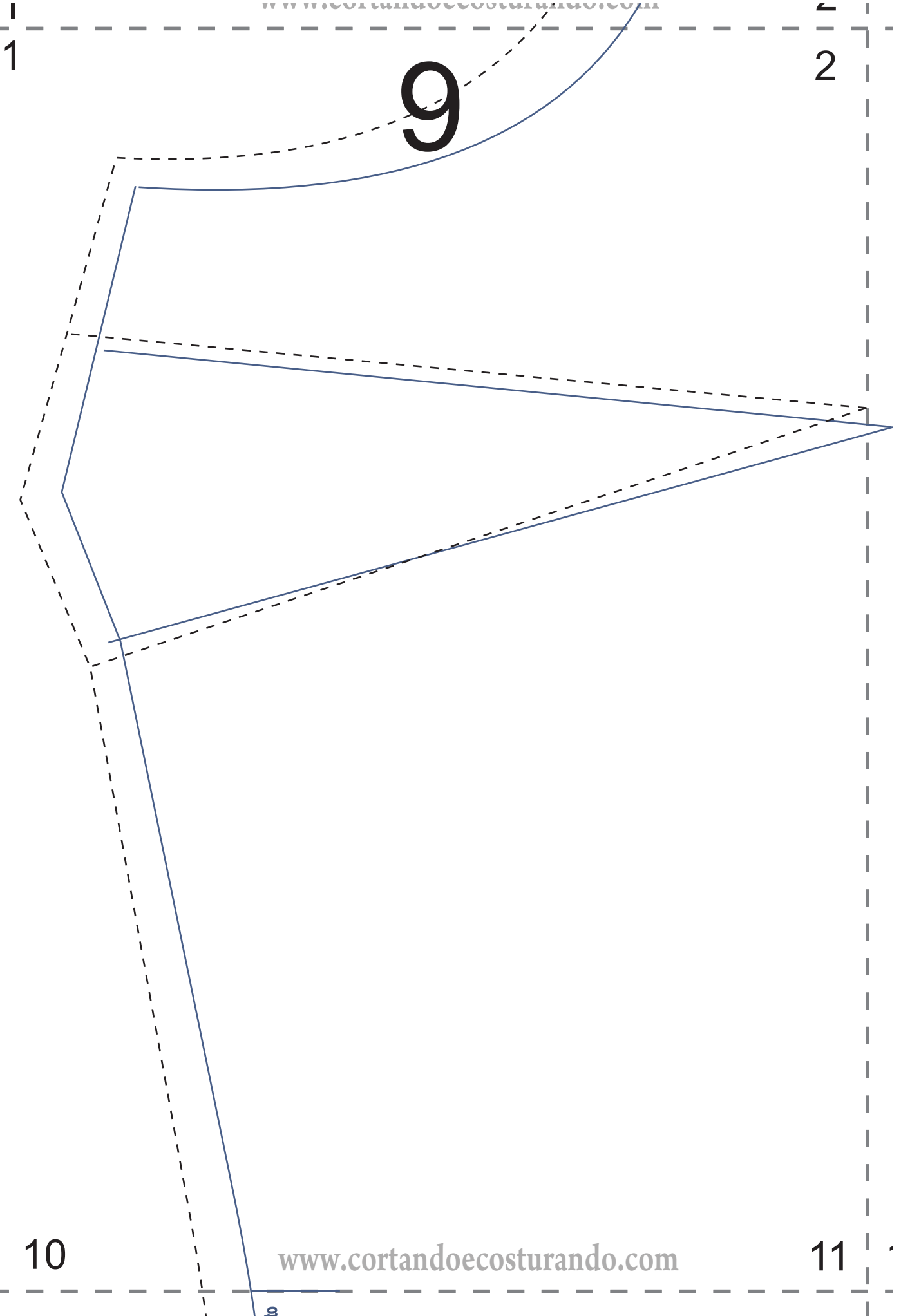
8



8

www.cortandocosturando.com

9



1

2

9

10

11

10

10

2

3

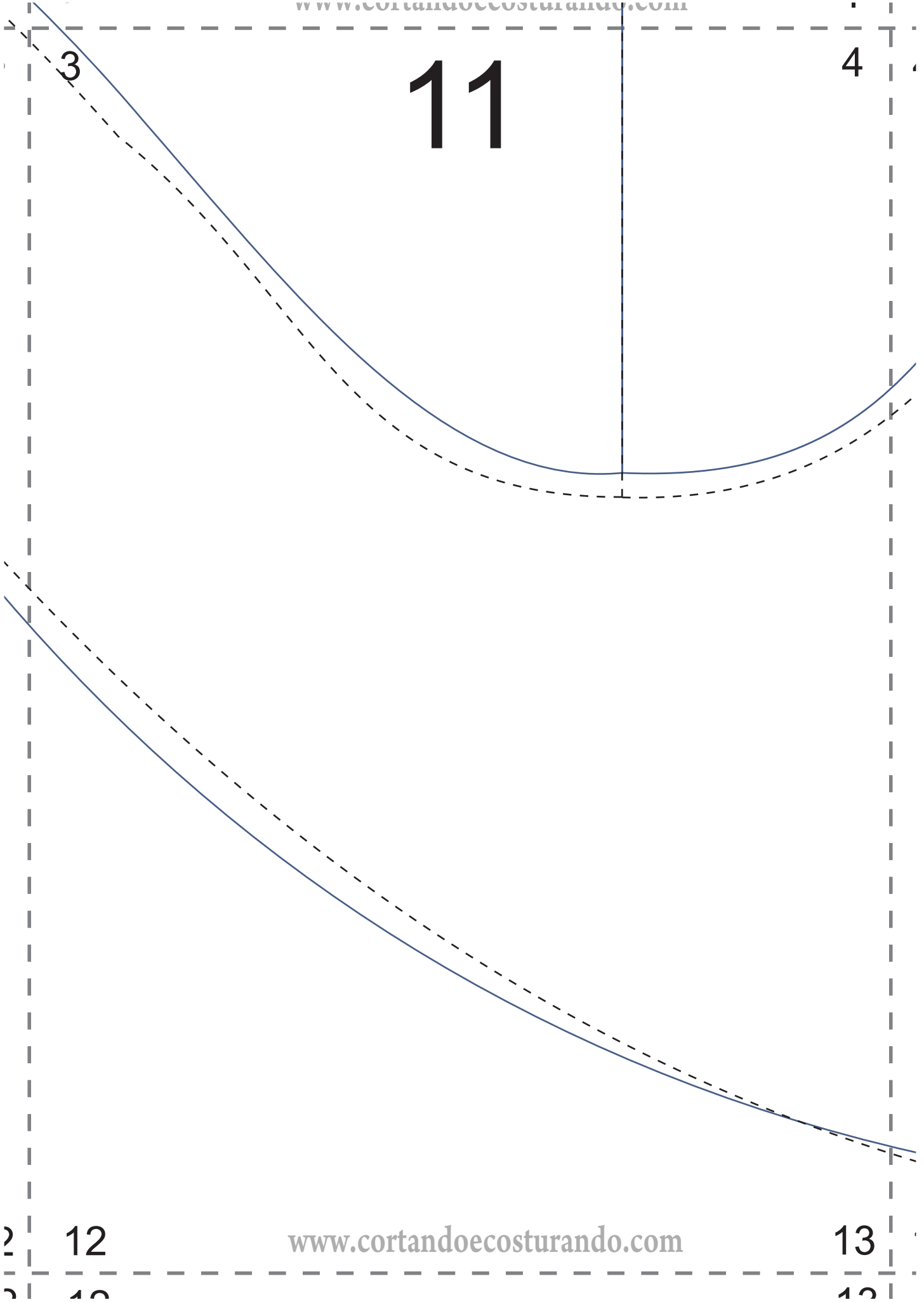


11

[www.cortandoeconomizando.com](http://www.cortandoeconomizando.com)

12

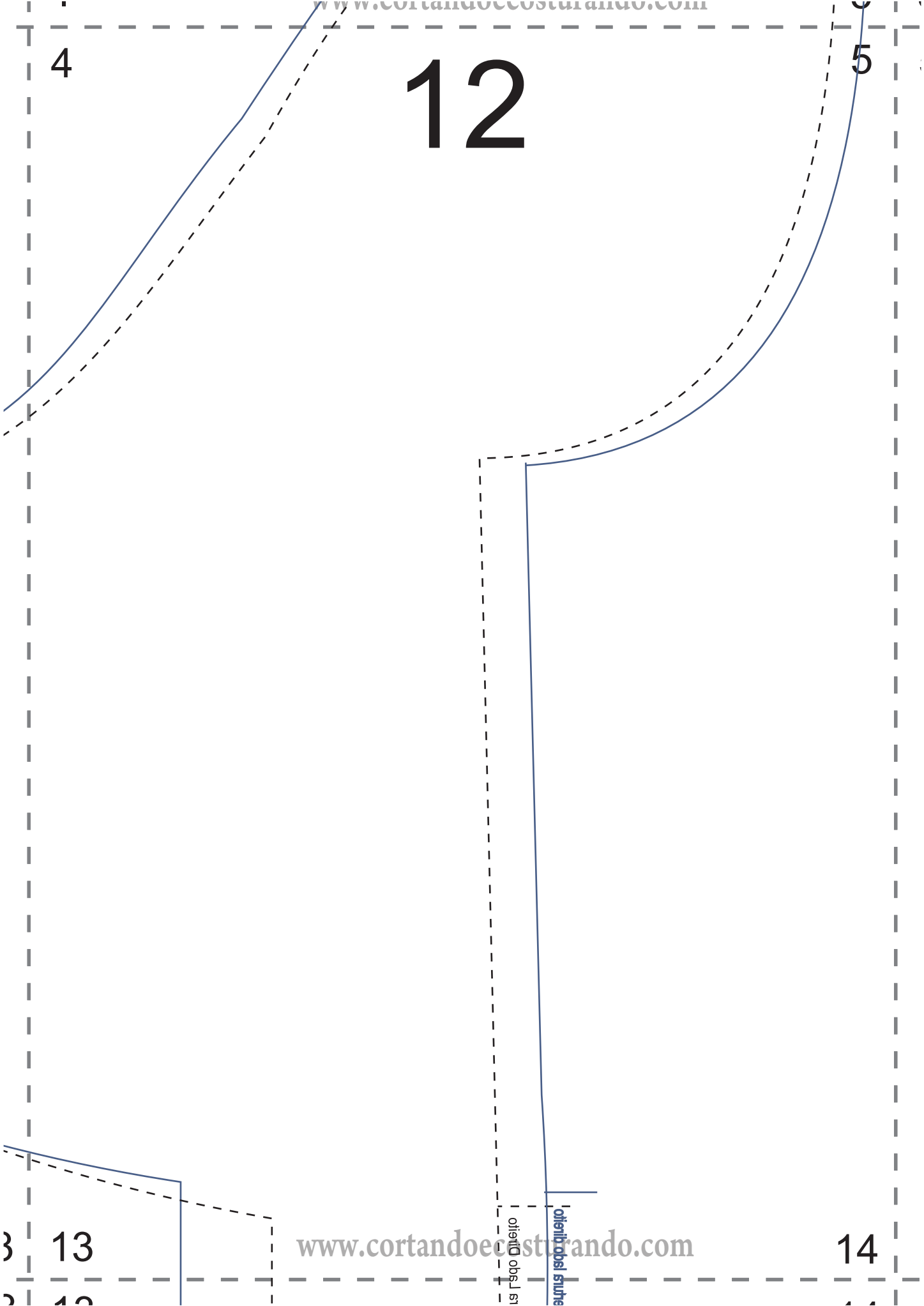
rente



# 12

4

5



3

13

14

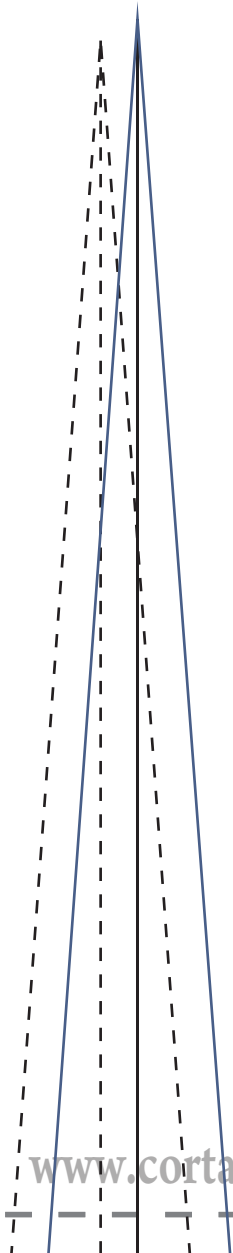
www.cortandoeccosturando.com

www.cortandoeccosturando.com

5

# 13

6



14

15

6

7

14

15

16



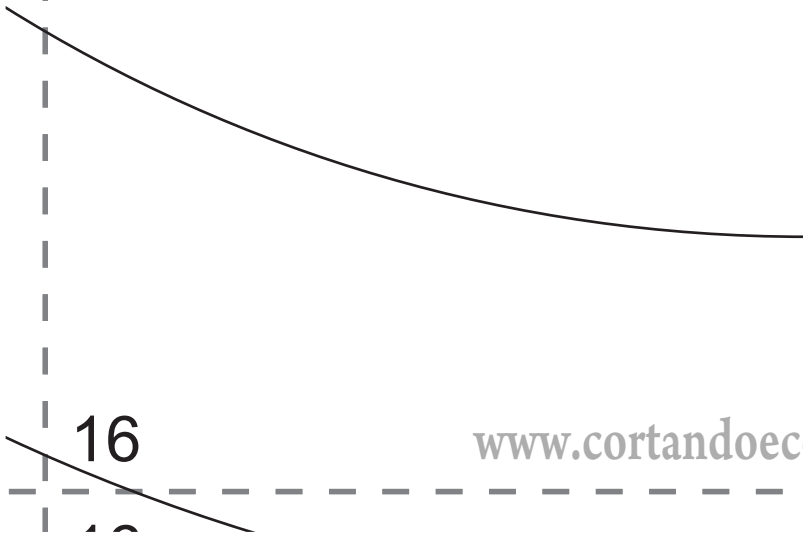
15

7

8

16

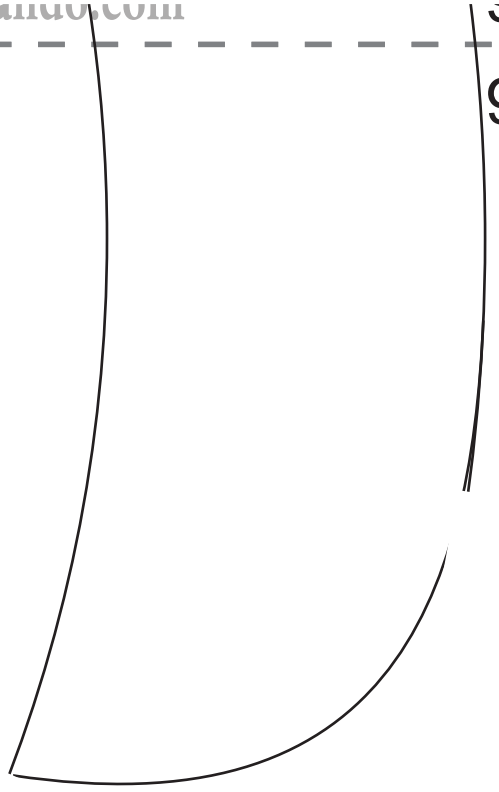
17



8

16

9



7 17

18

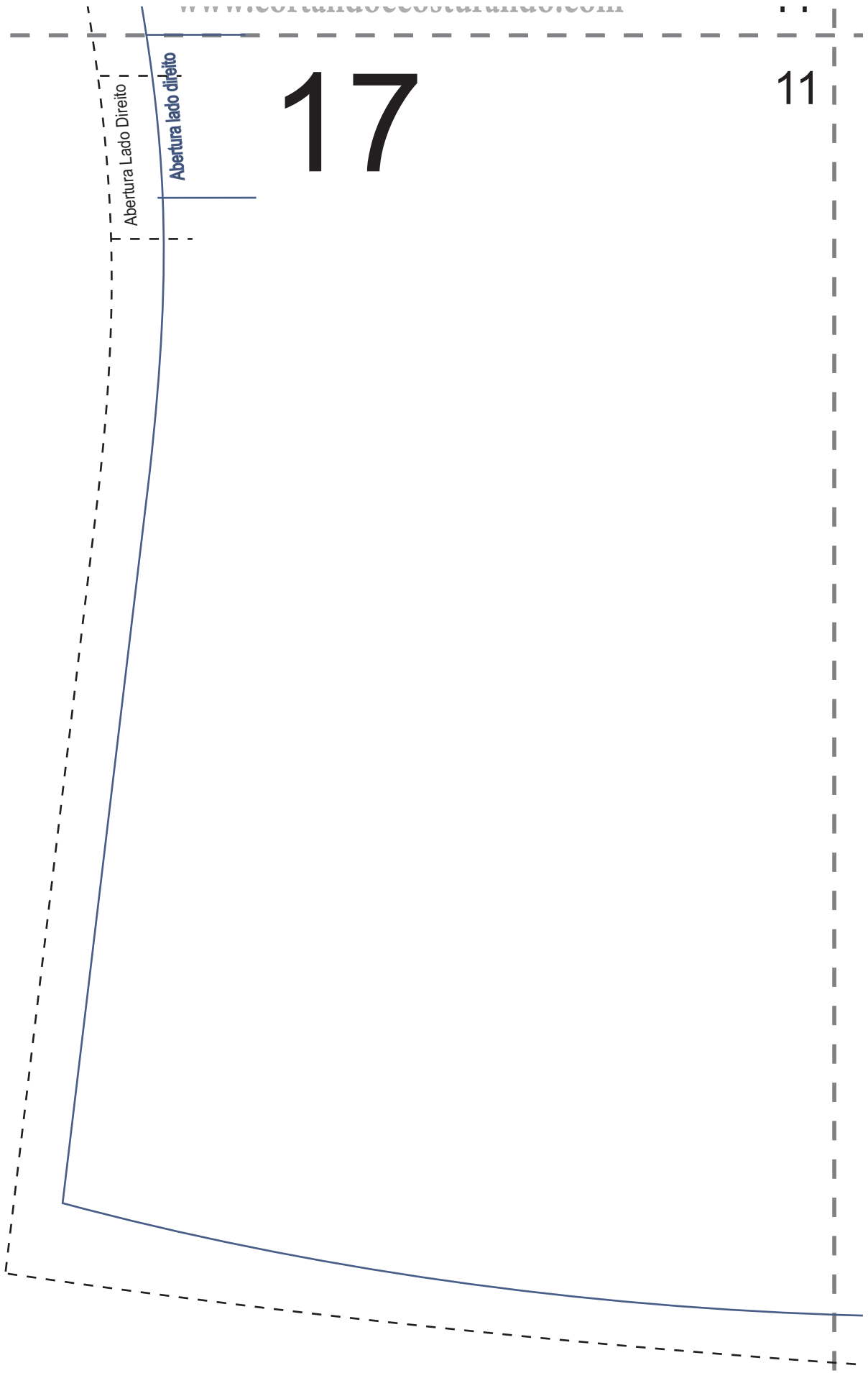
10

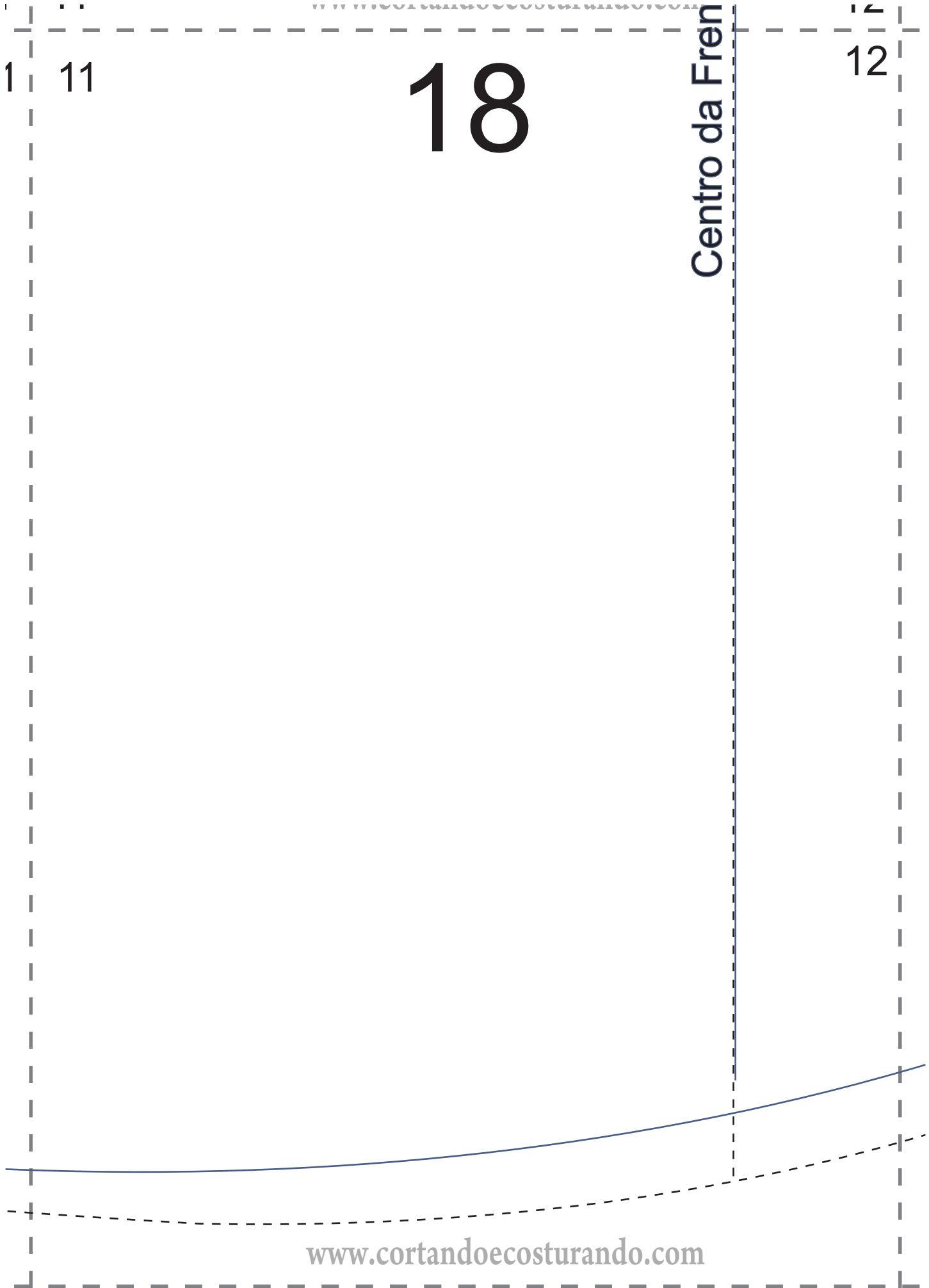
11

# 17

Abertura Lado Direito

Abertura lado direito

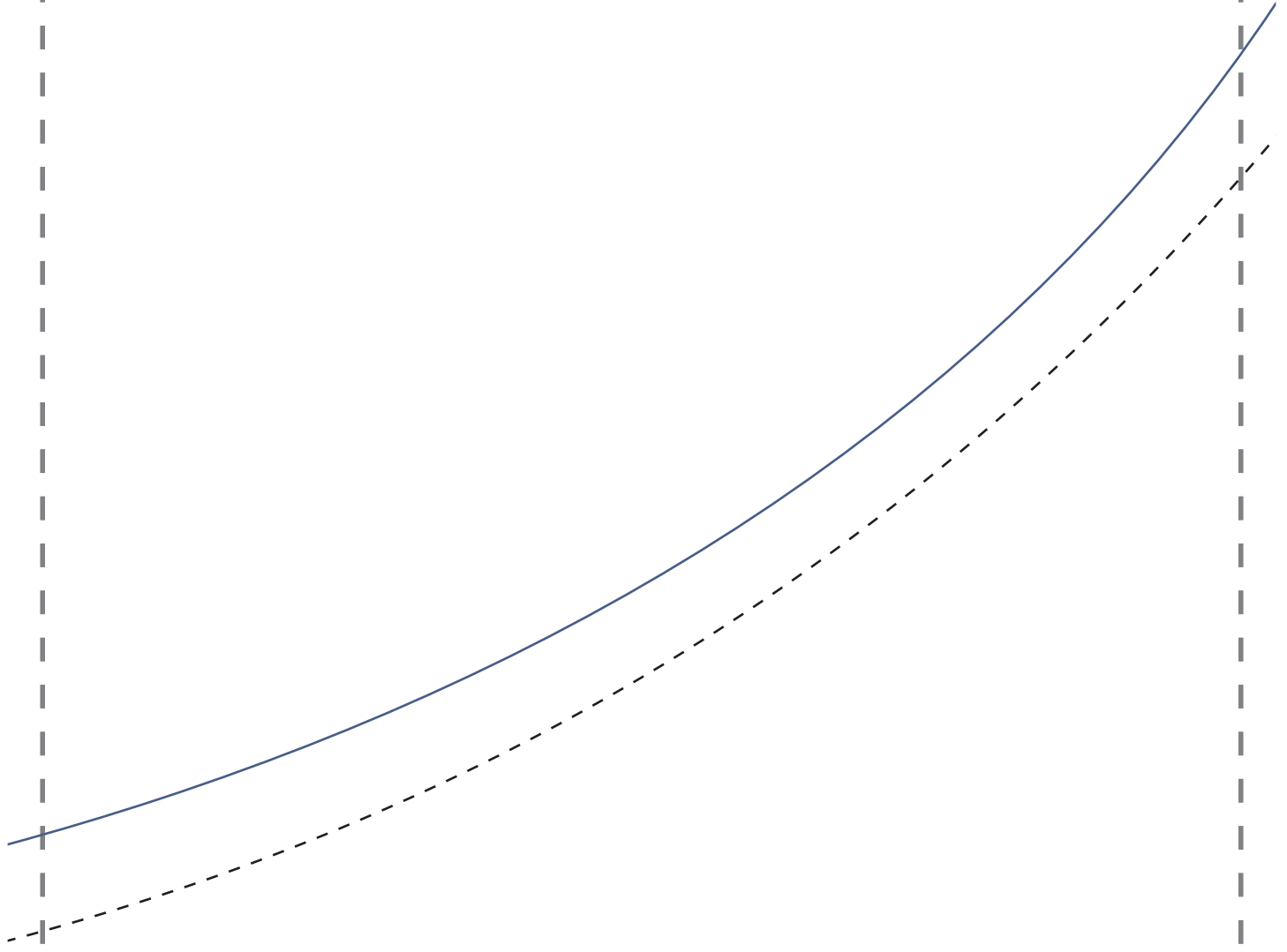




12  
2 12

13  
13

# 19



3 13

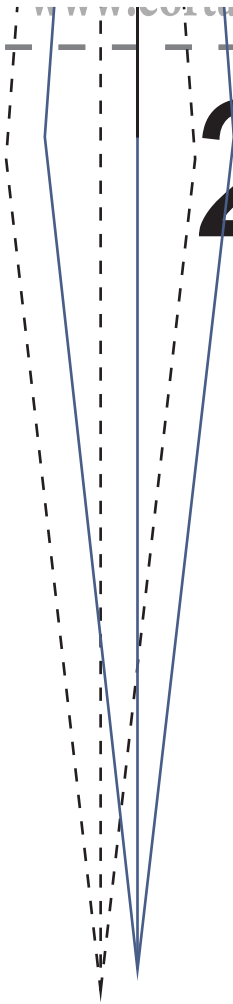
14

20

14

15

21

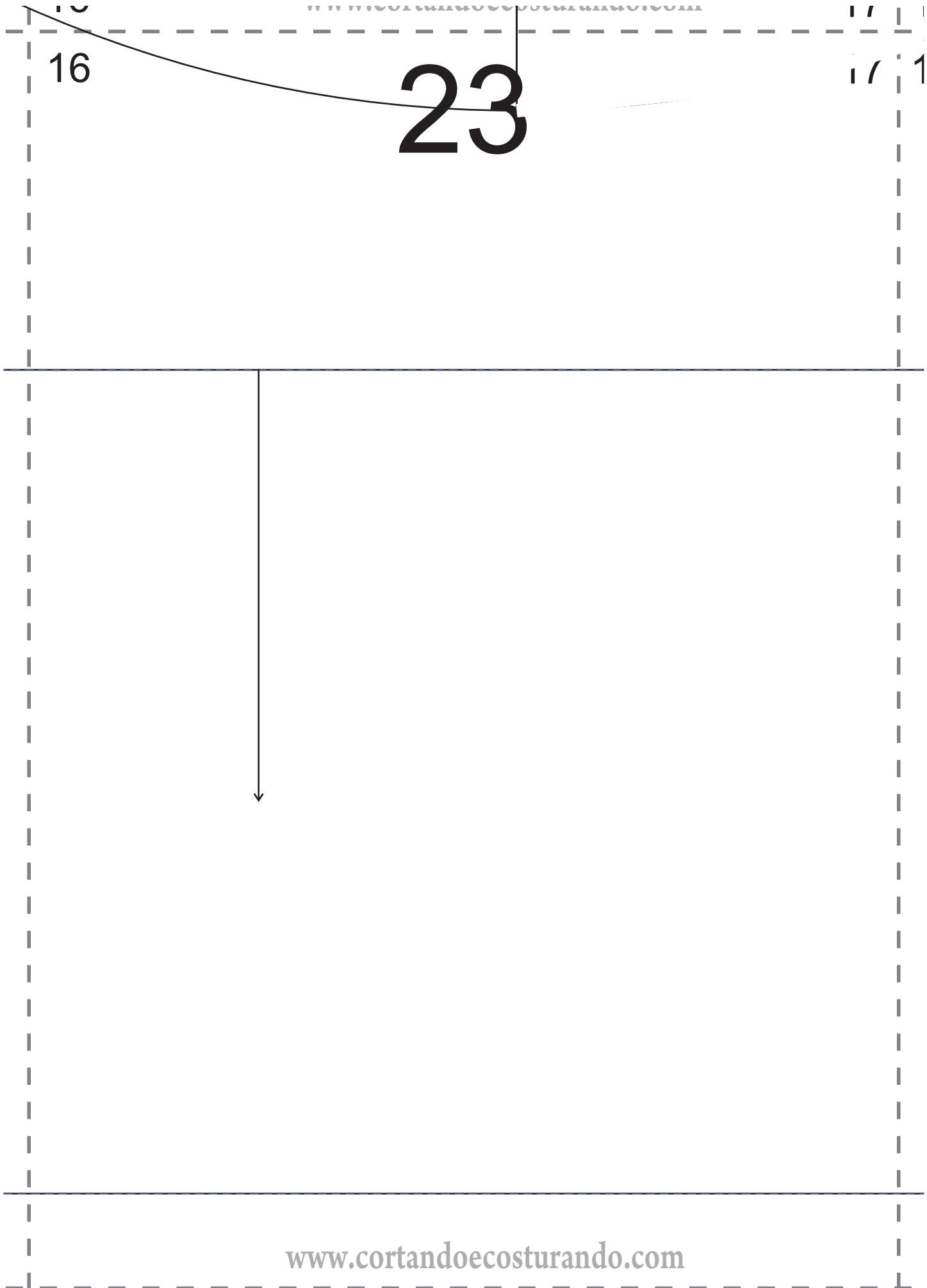


15

22

16





16

23

17

1

17

18

24

