

Sugestão e Tecido: Cetim

Metragem: 80cm com 1,40m de Largura

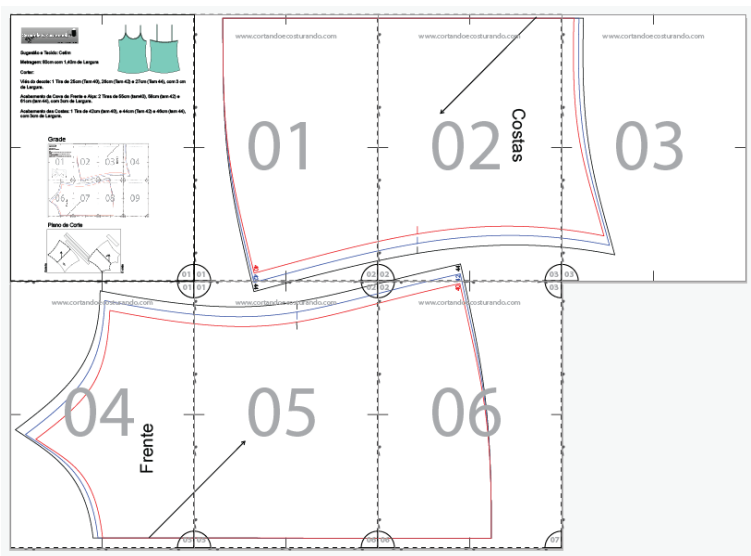
Cortar:

Viés do decote: 1 Tira de 25cm (Tam 40), 26cm (Tam 42) e 27cm (Tam 44), com 3 cm de Largura.

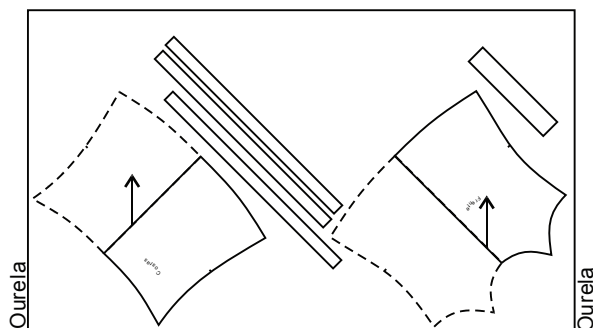
Acabamento da Cava da Frente e Alça: 2 Tiras de 55cm (tam40), 58cm (tam 42) e 61cm (tam 44), com 3cm de Largura.

Acabamento das Costas: 1 Tira de 42cm (tam 40), e 44cm (Tam 42) e 46cm (tam 44), com 3cm de Largura.

## Grade



## Plano de Corte



www.cortandoecosturando.com

01



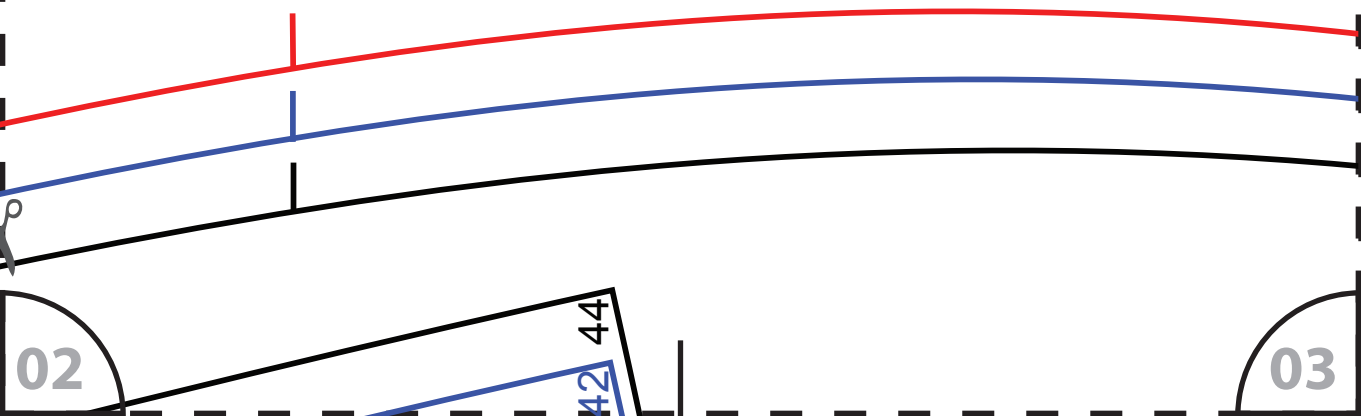
40  
42



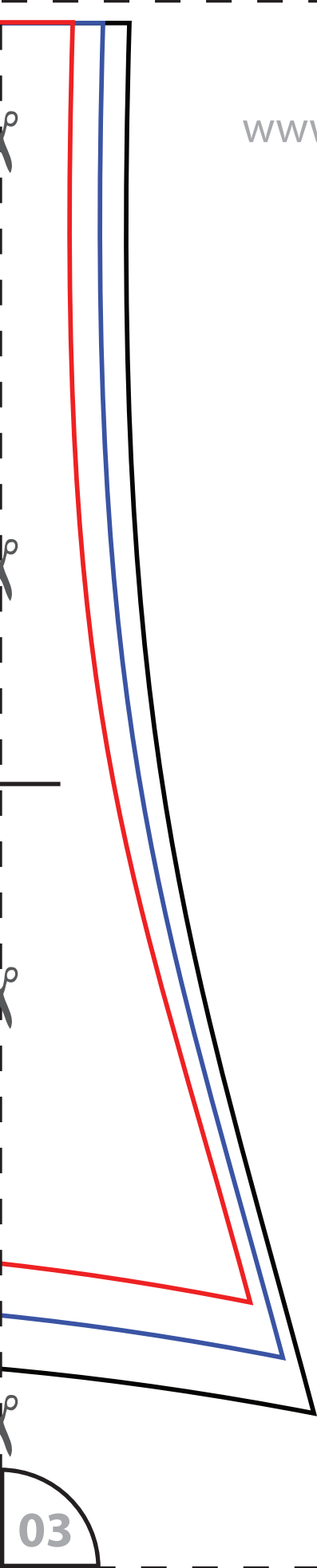
# Costas

Acrecentar margens para costura

02



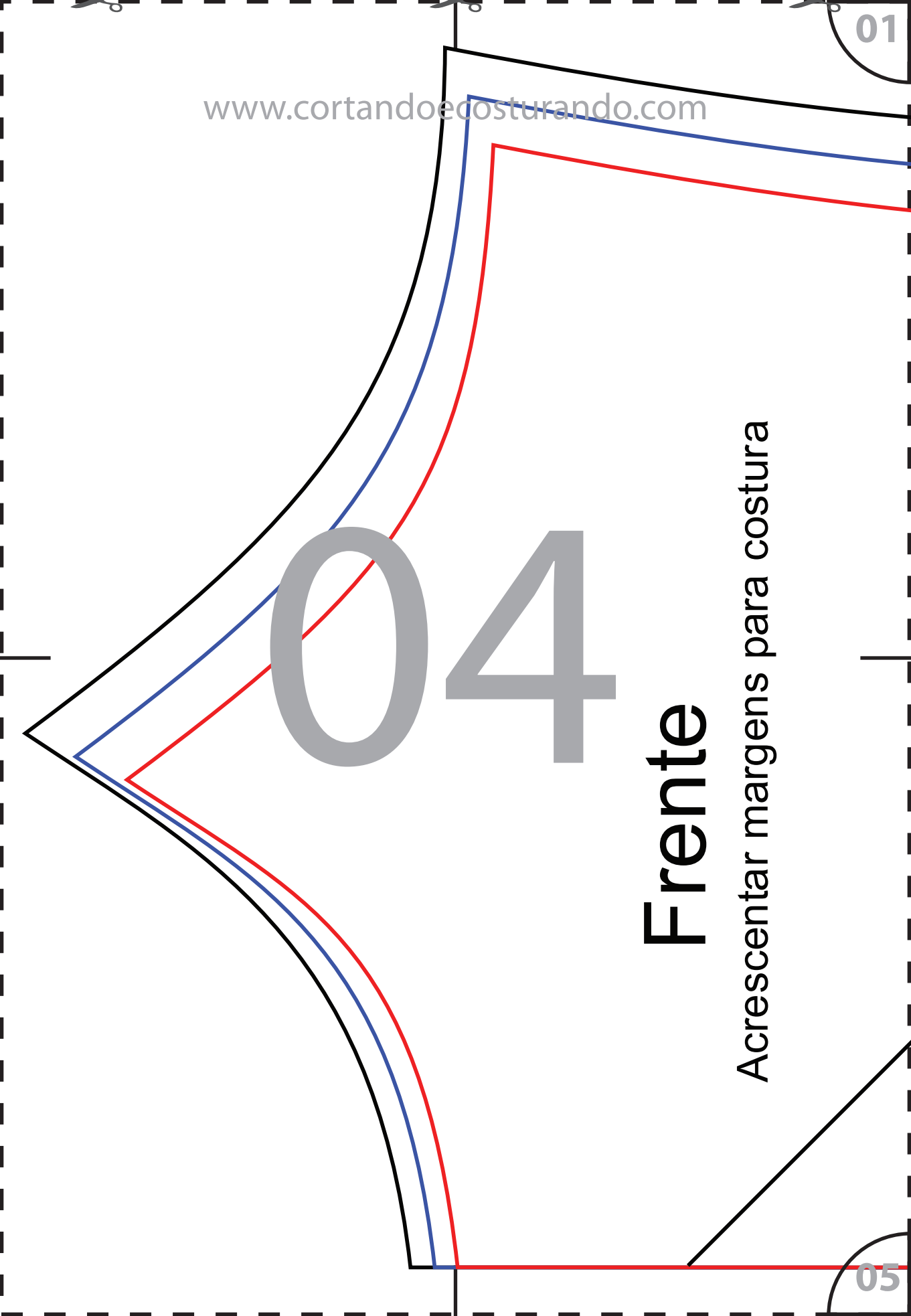
# 03



04

# Frente

Acrescentar margens para costura



01

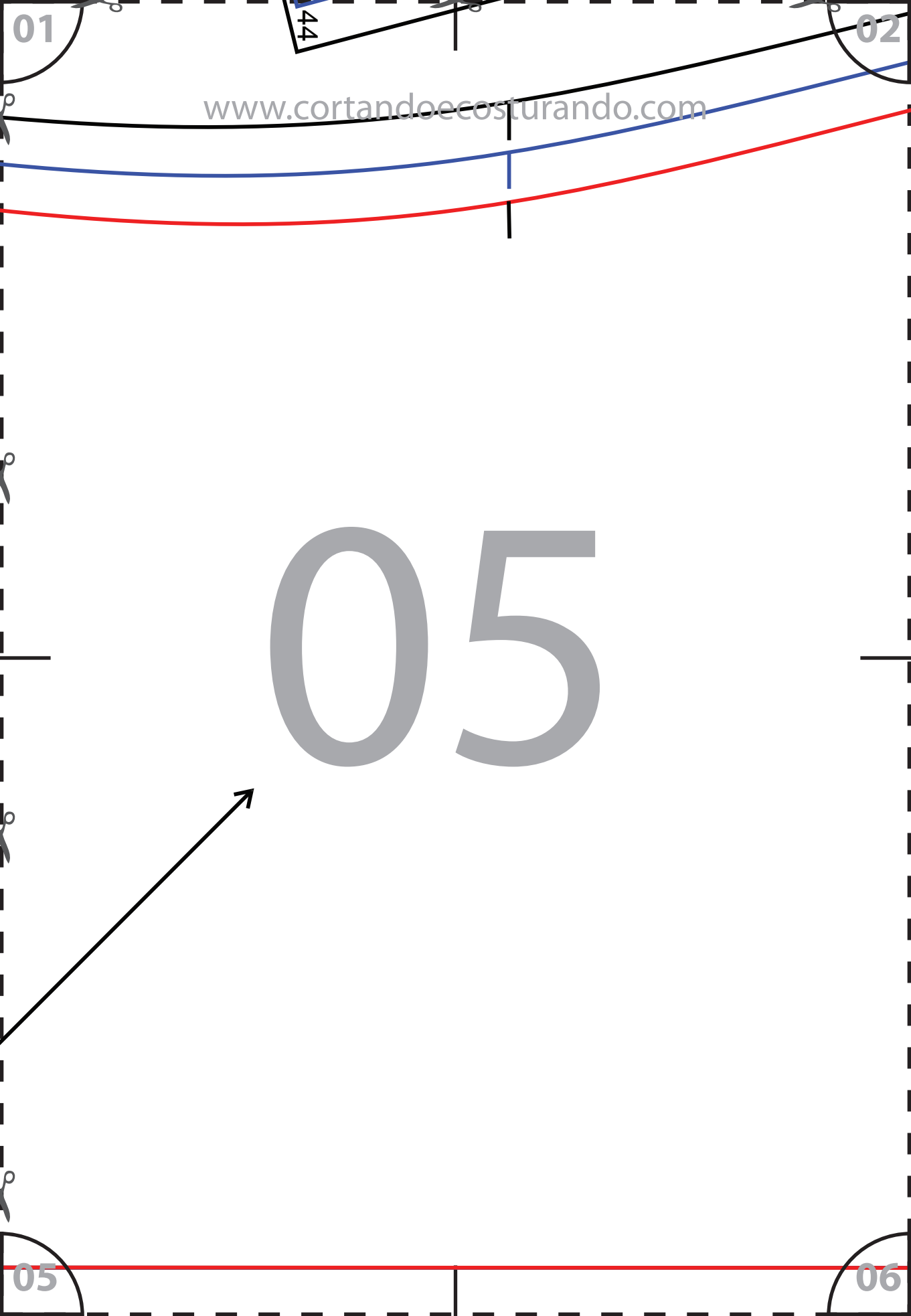
02

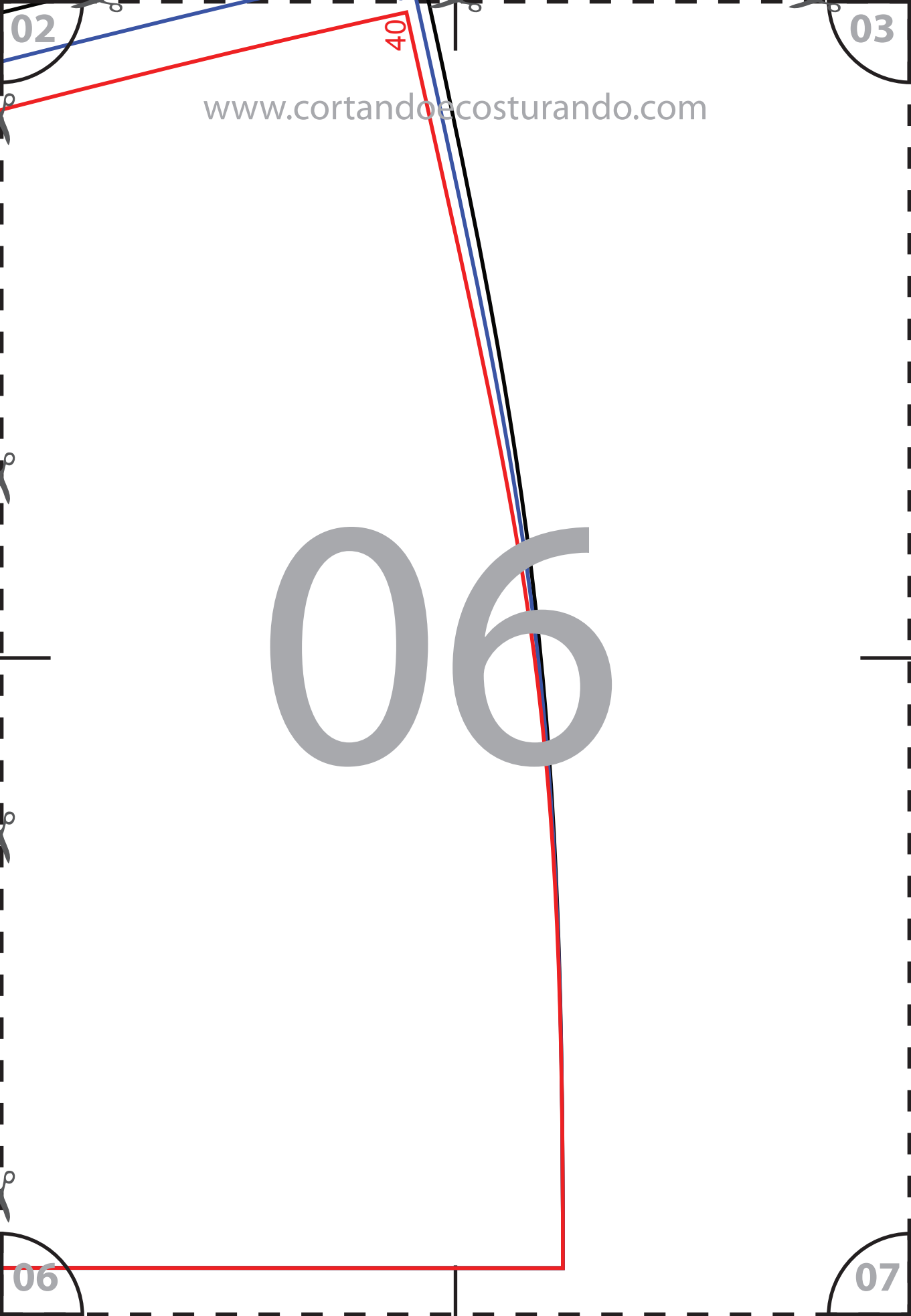
www.cortandoecosturando.com

05

05

06





www.cortandoeocosturando.com

06

02

03

40

06

07