

Vestido Tam.- 42

Material

2,30m de Tecido

Entretela para o Cinto e para a Vista.

Fivela

Botões



Peças do Molde

Acrescentar margem para as costuras.

A - Frente Superior lateral

B - Frente Superior Central

C - Costa Superior

D - Frente Inferior

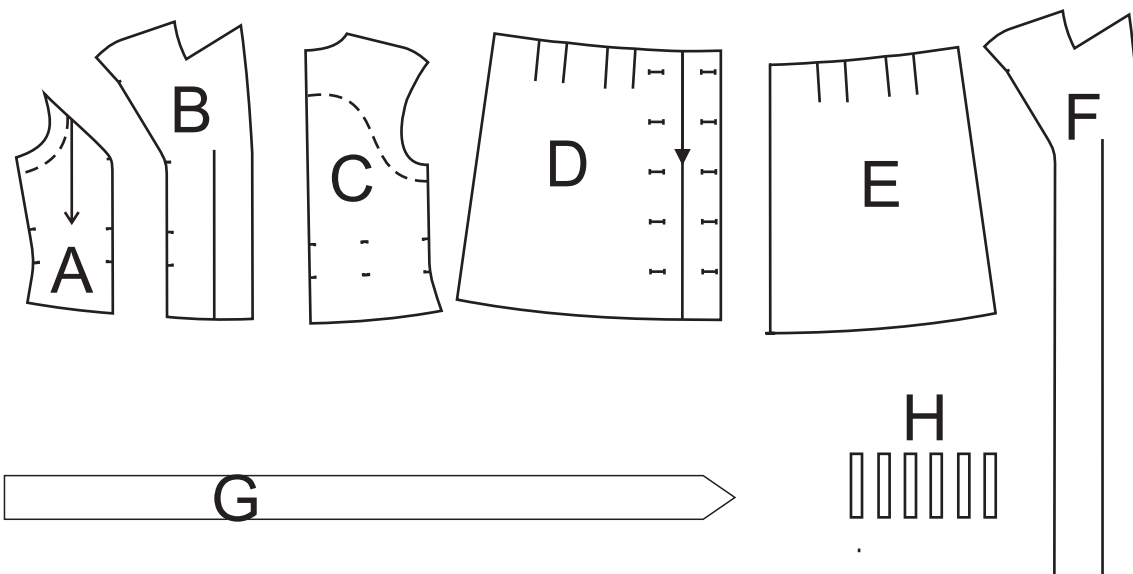
E - Costa Inferior

F - Vista

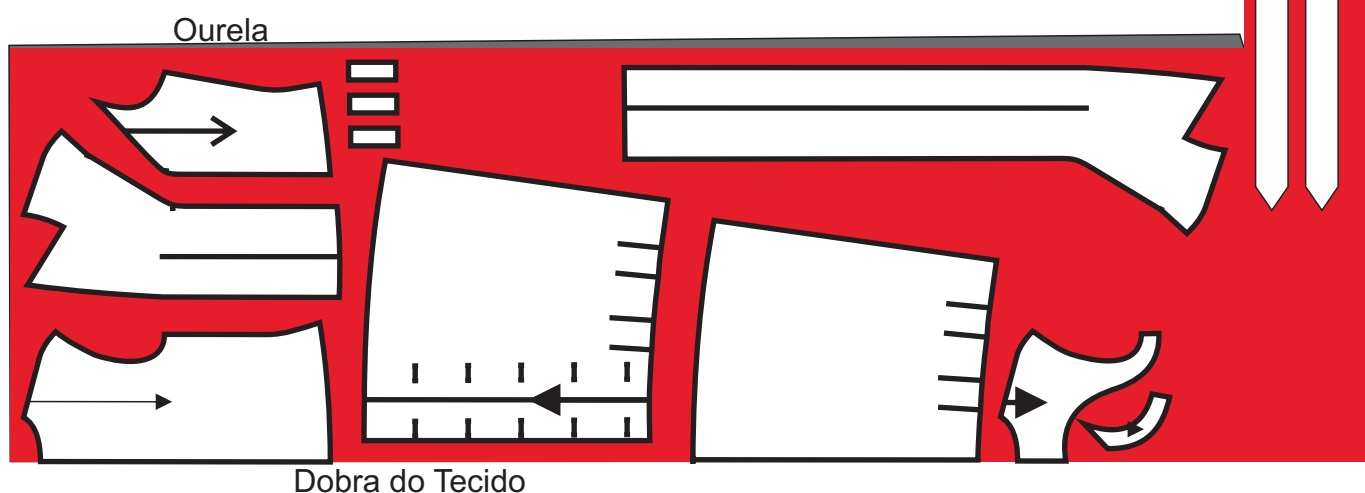
G - Cinto Cortar duas tiras de 92cmX7,5cm. Fazer a ponta conforme Figura.

H - 6 Passadores de 3cm de largura por 8cm de Altura.

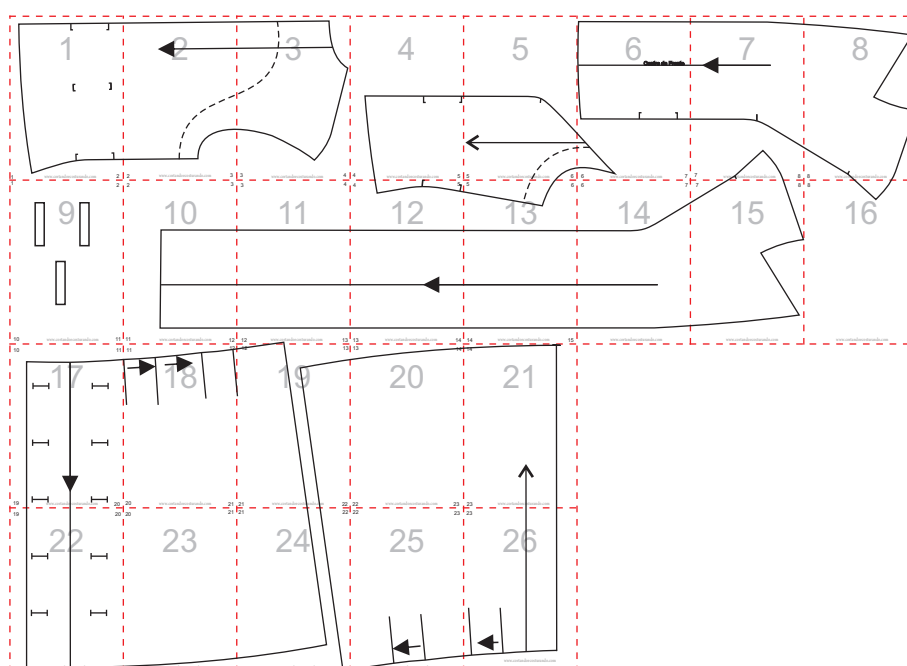
Obs. As medidas do cinto e dos passadores já estão com margem para costura.

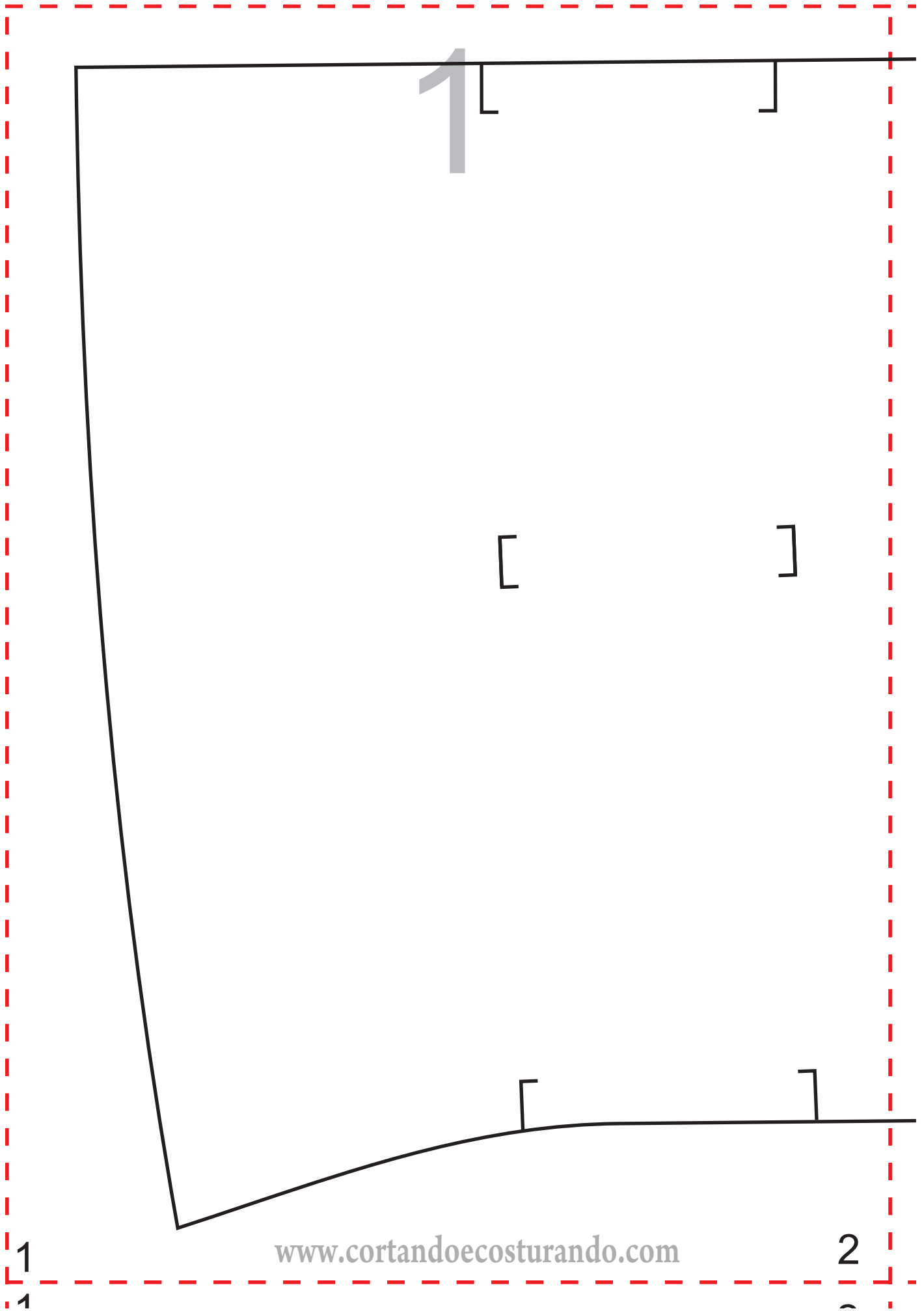


Plano de Corte



Imprimir a conforme orientações para moldes online.

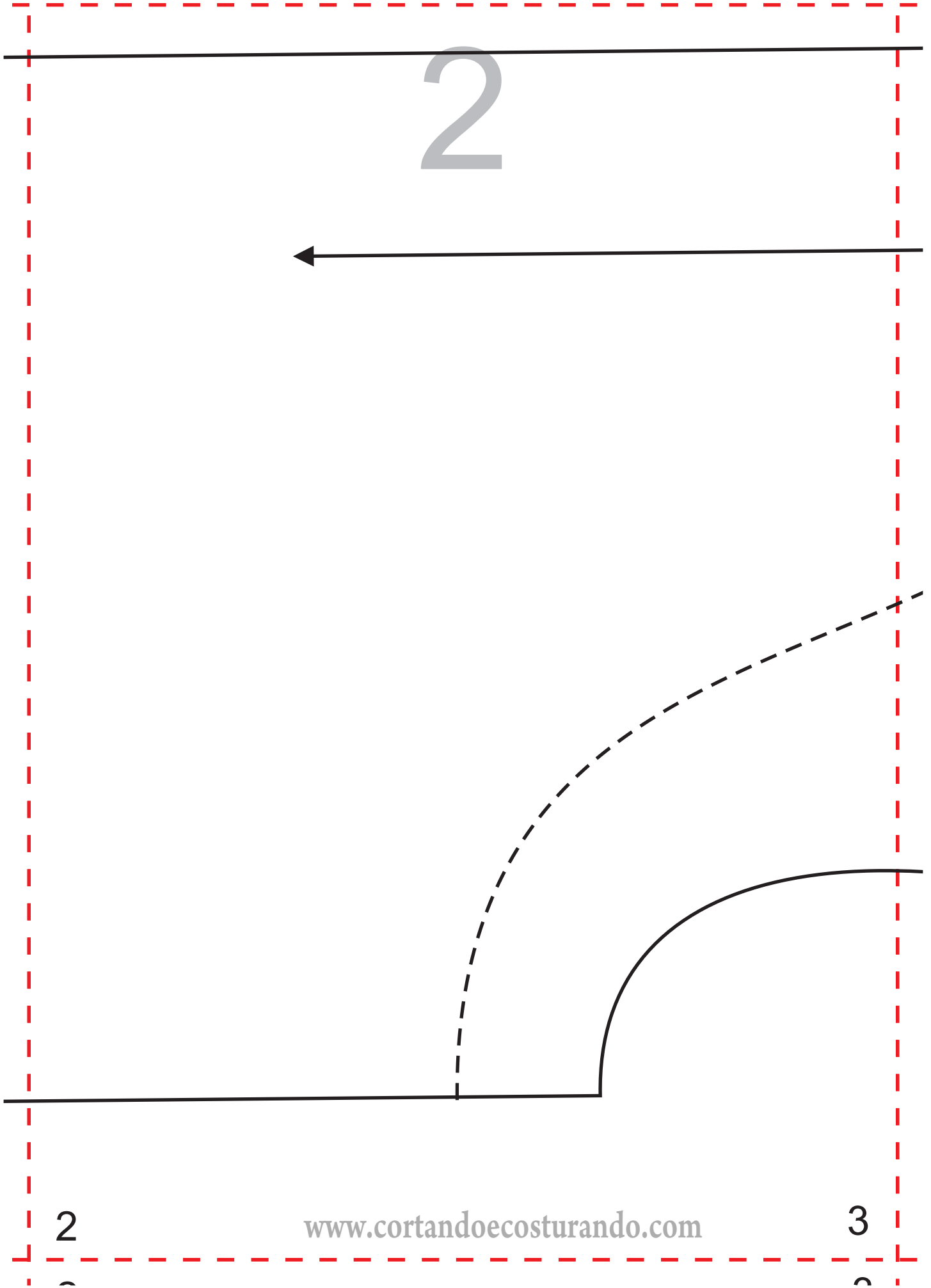




1

www.cortandocosturando.com

2



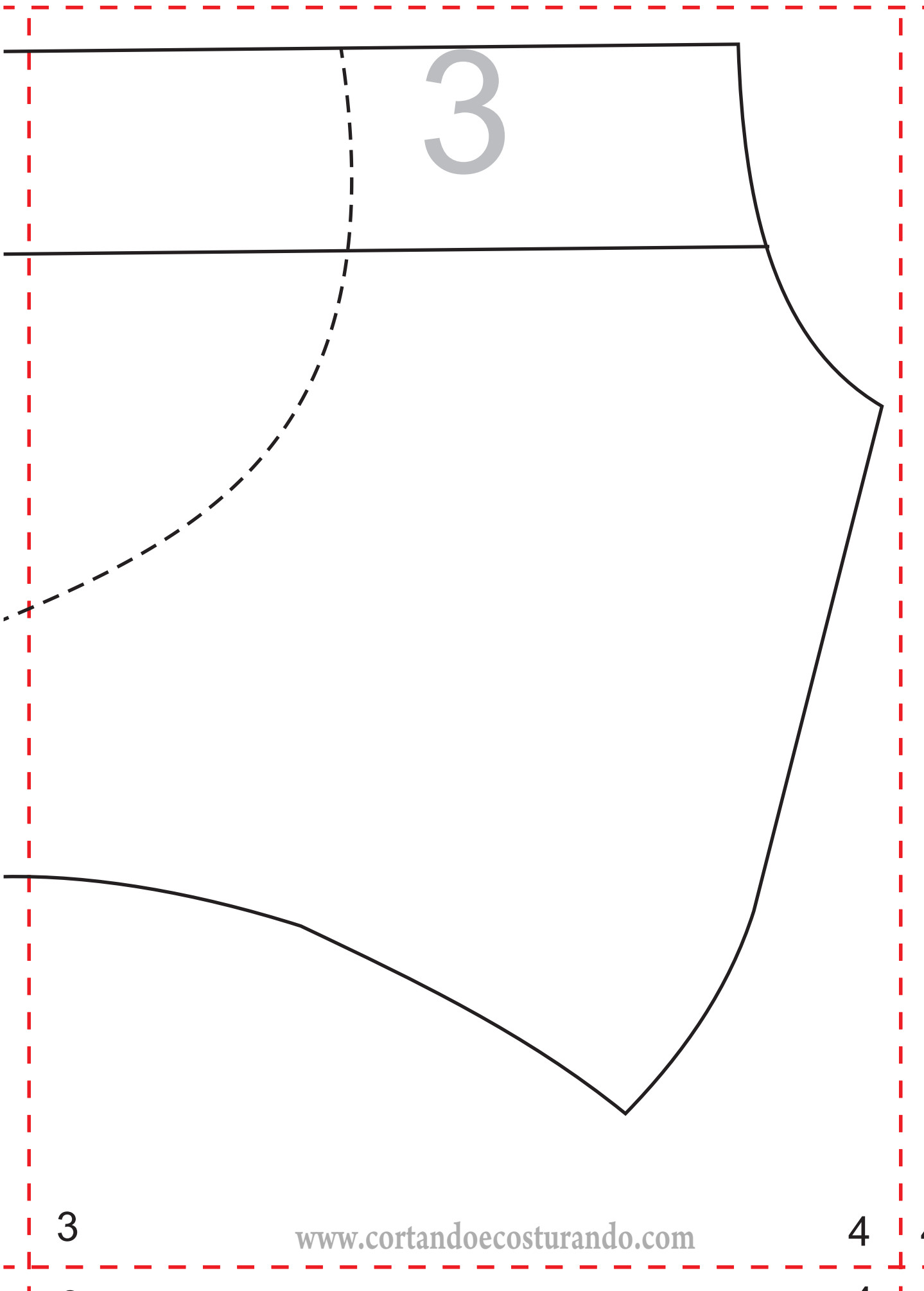
2



2

www.cortandocosturando.com

3



3

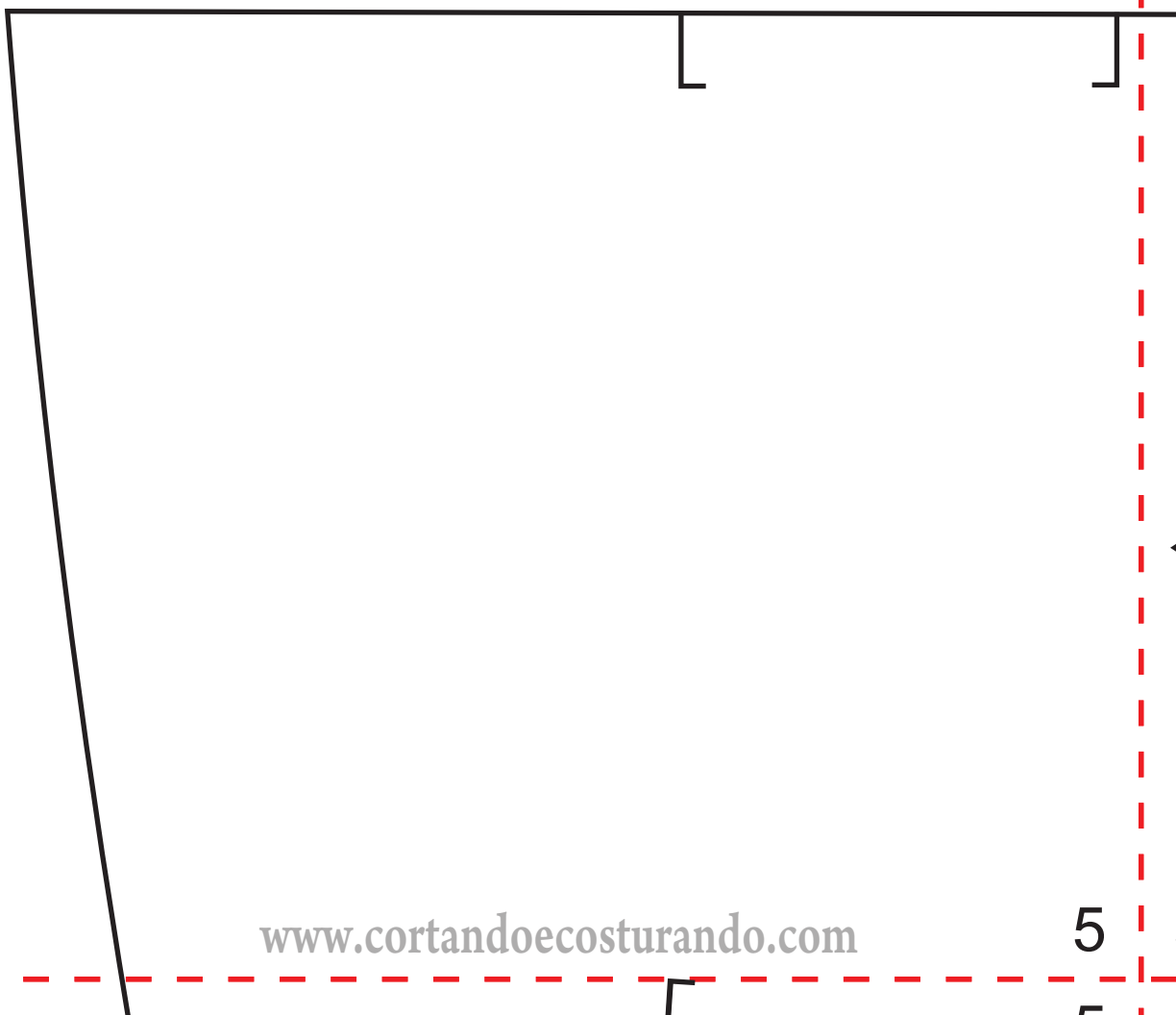
3

www.cortandoecosturando.com

4

4

7

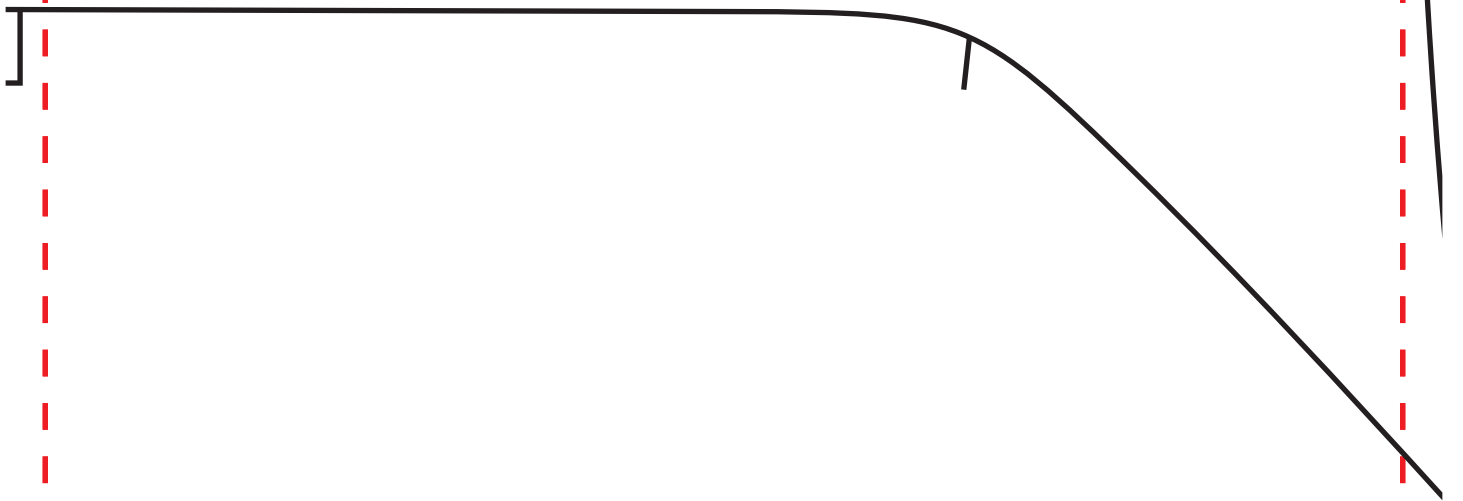


4

www.cortandoecosturando.com

5

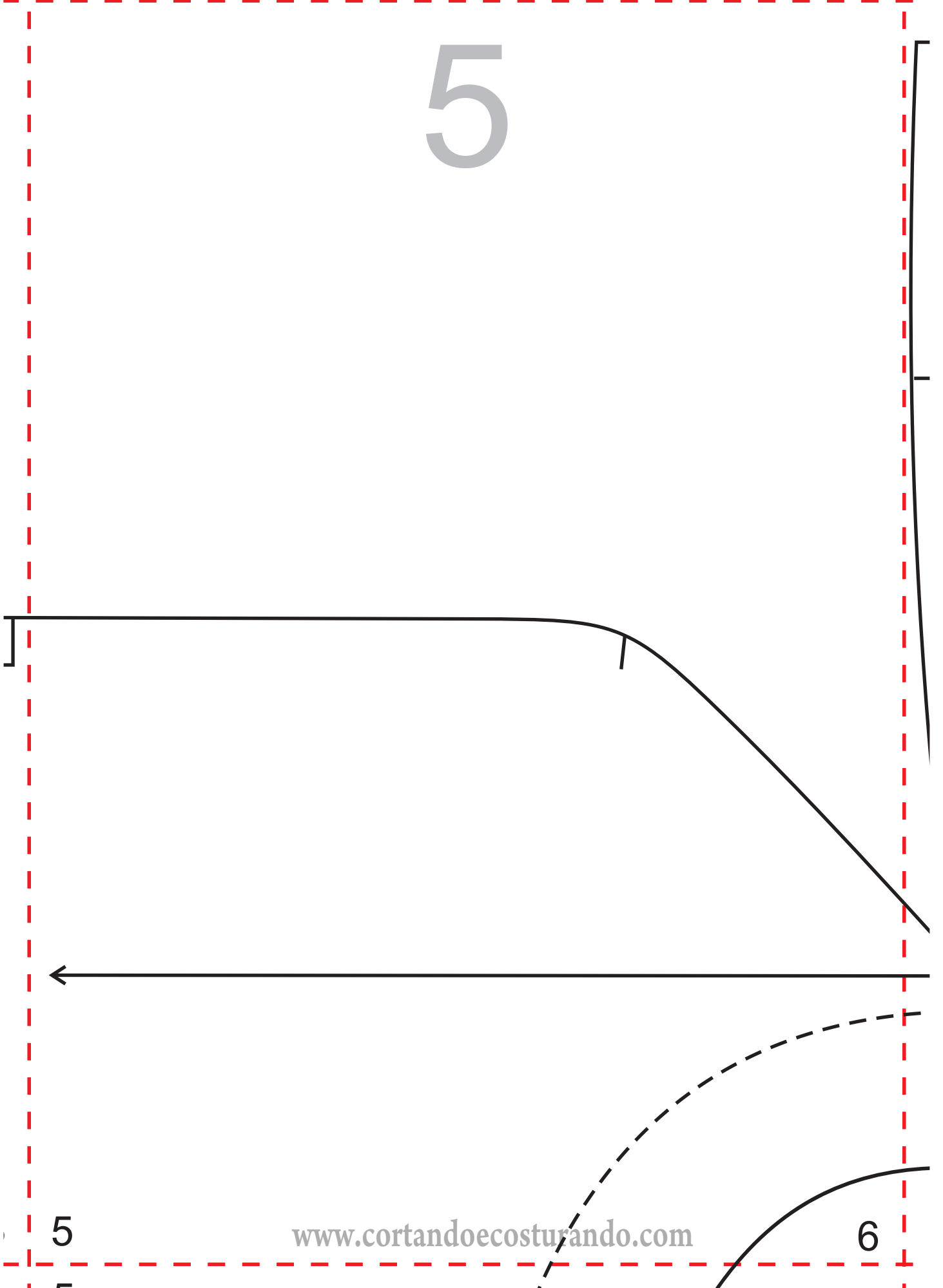
5



5

www.cortandoecosturando.com

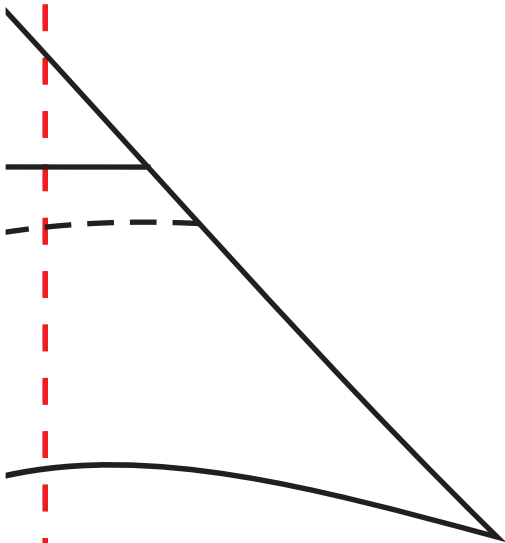
6



6

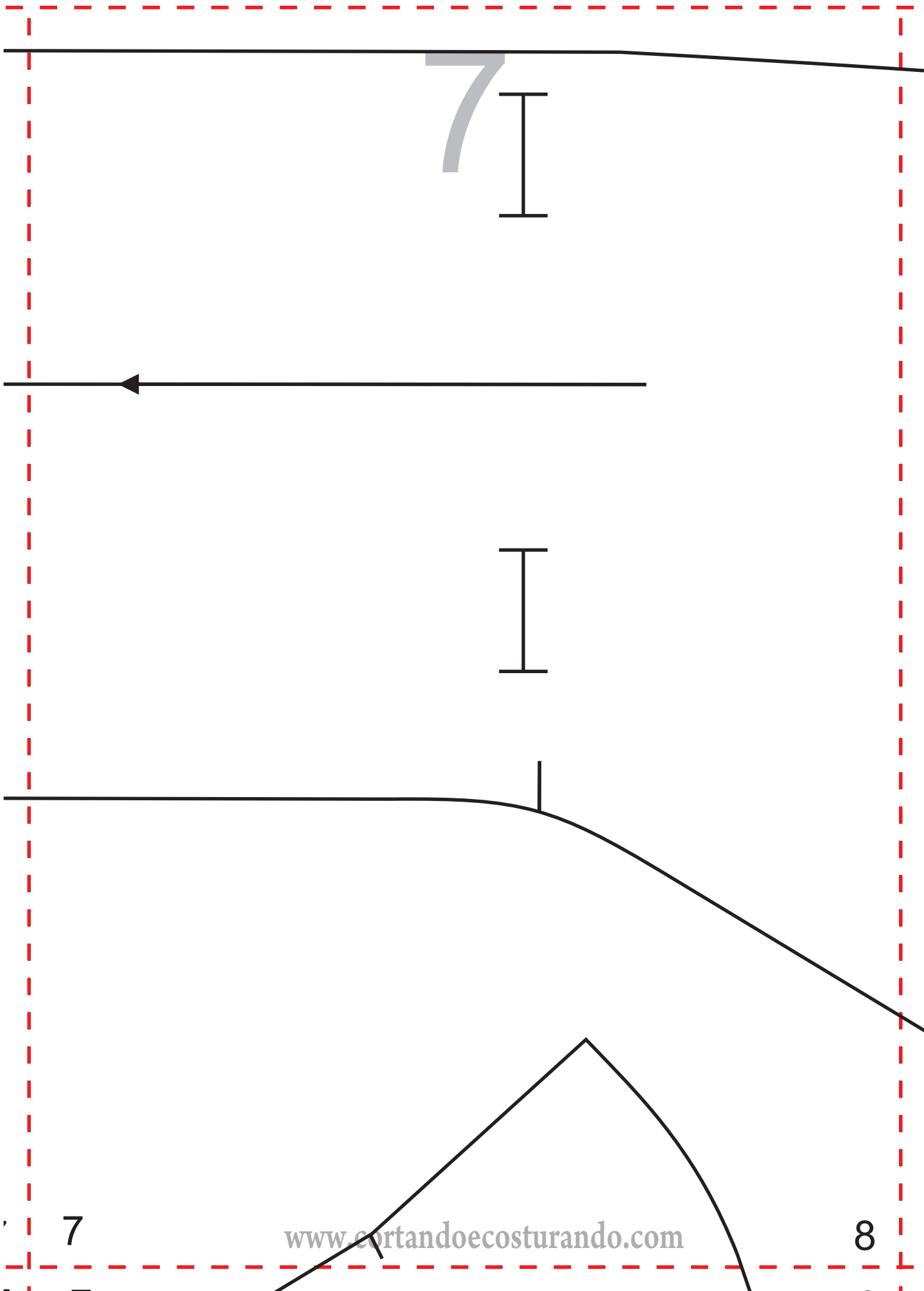


Centro da Frente



6

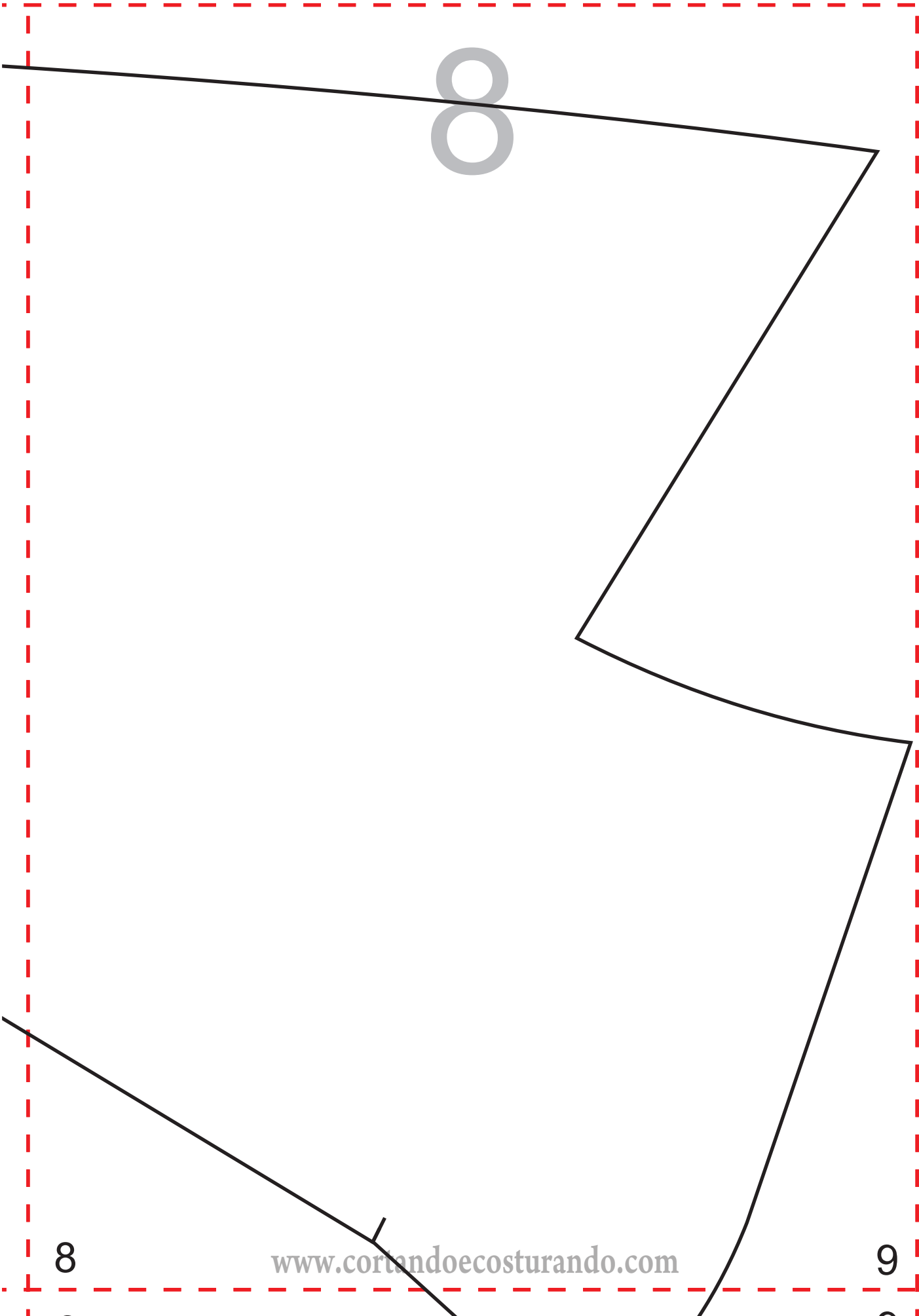
7



7

www.cortandoecosturando.com

8



8

8

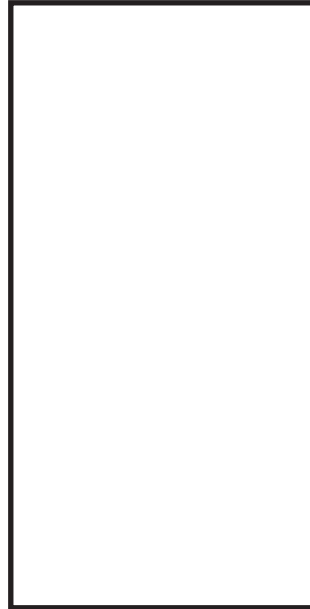
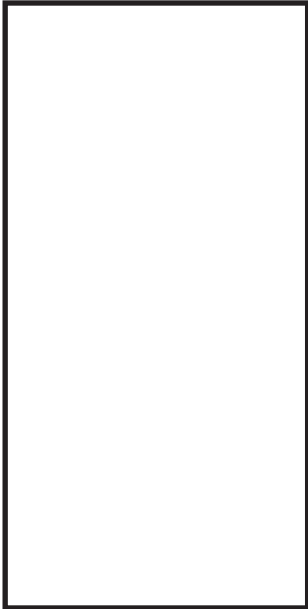
www.cortandocosturando.com

9

1
1

2
2

9



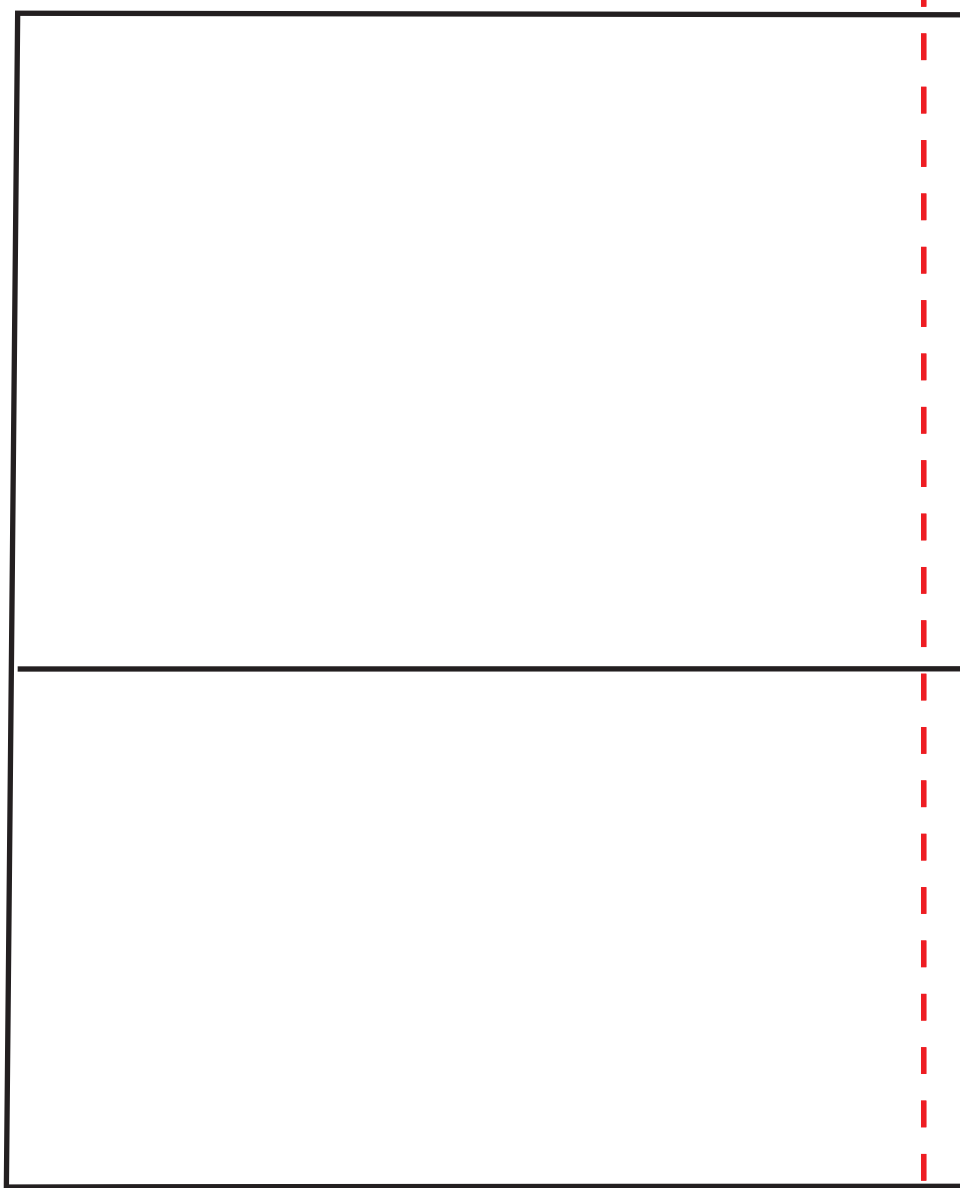
10

11

2

3

10



11

12

3

4

11

2 12

13

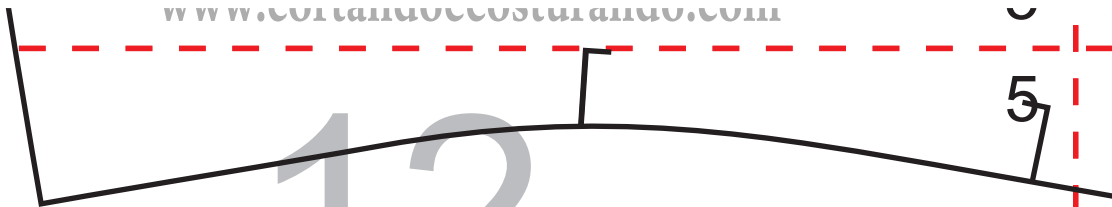
1 10

11

4

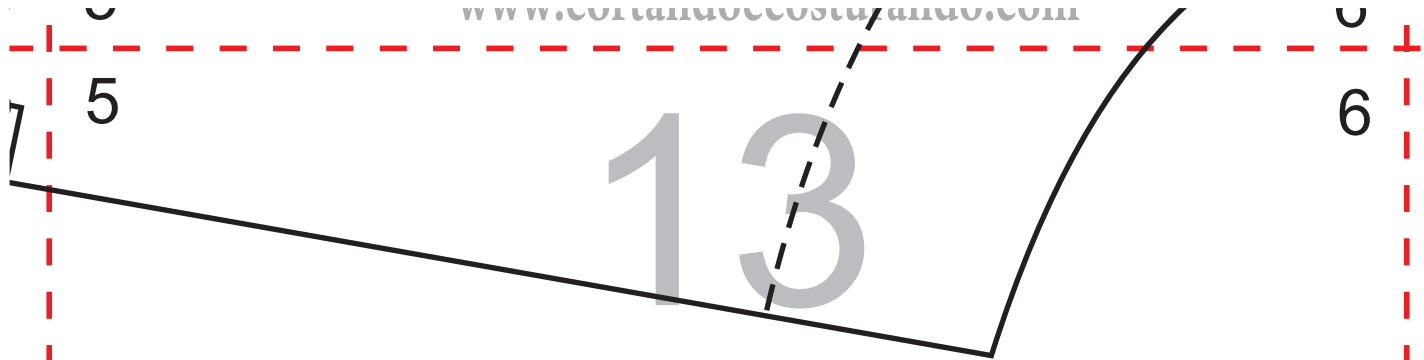
5

12



13

14



6

7

6

14

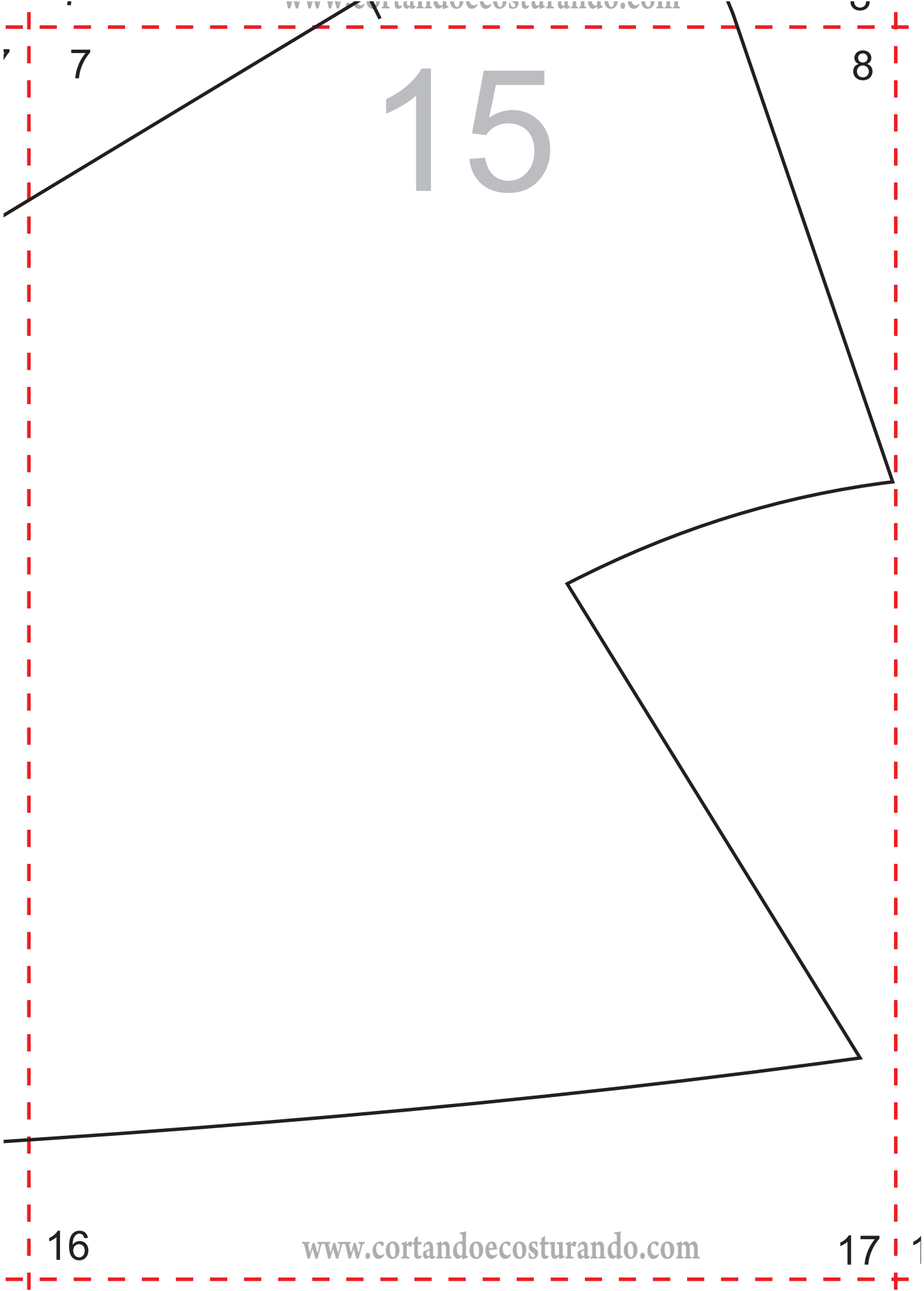
7



15

16

15



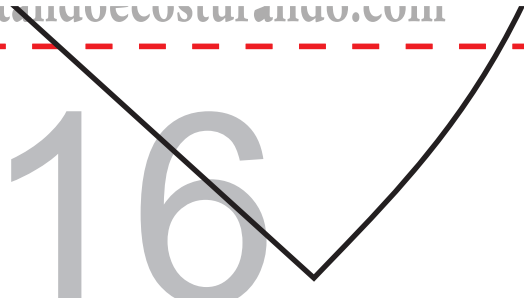
16

17

8

9

16



17

18

10

11

17



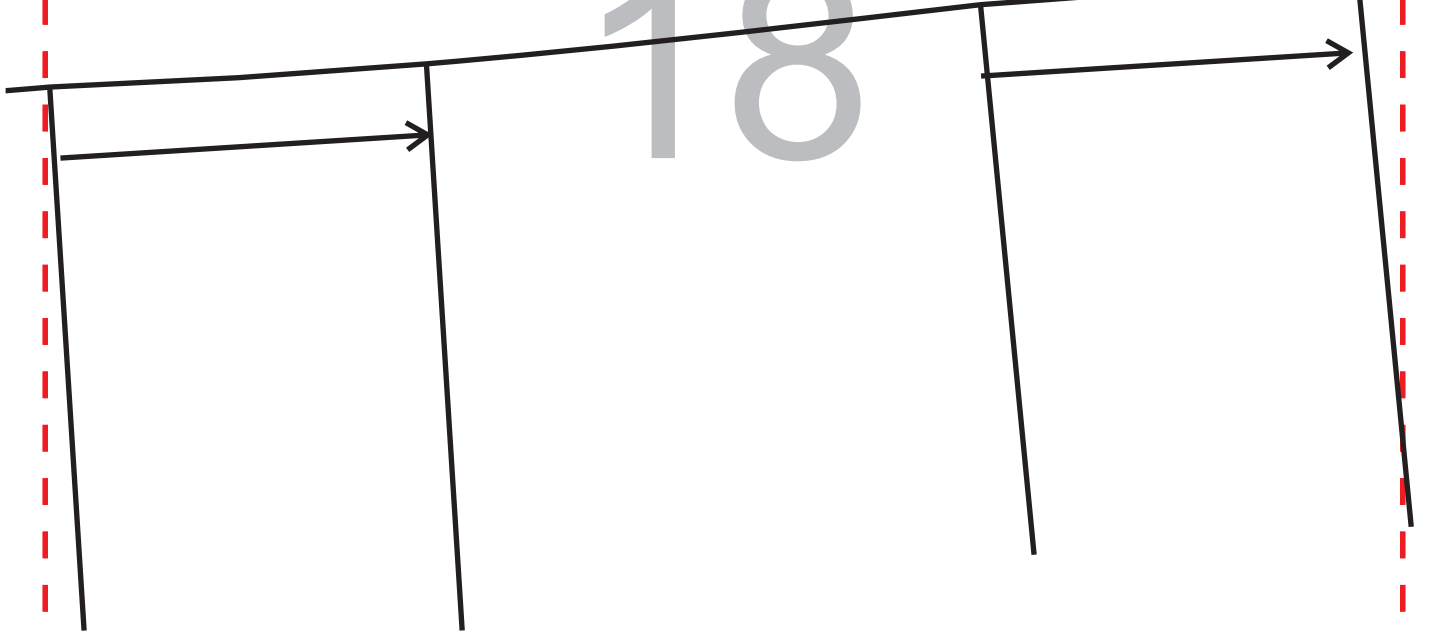
19

20

1 11

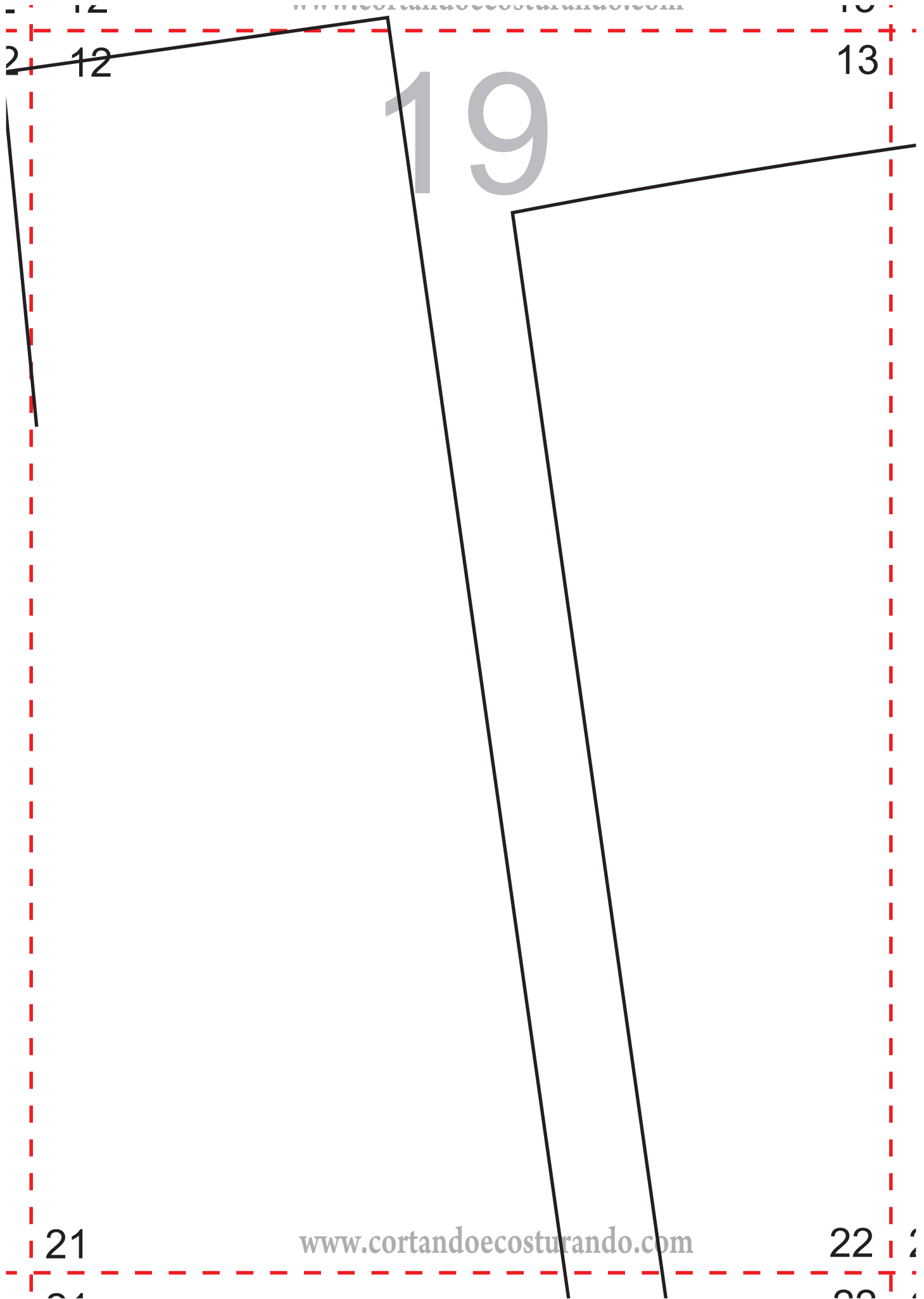
12

18



20

21 2



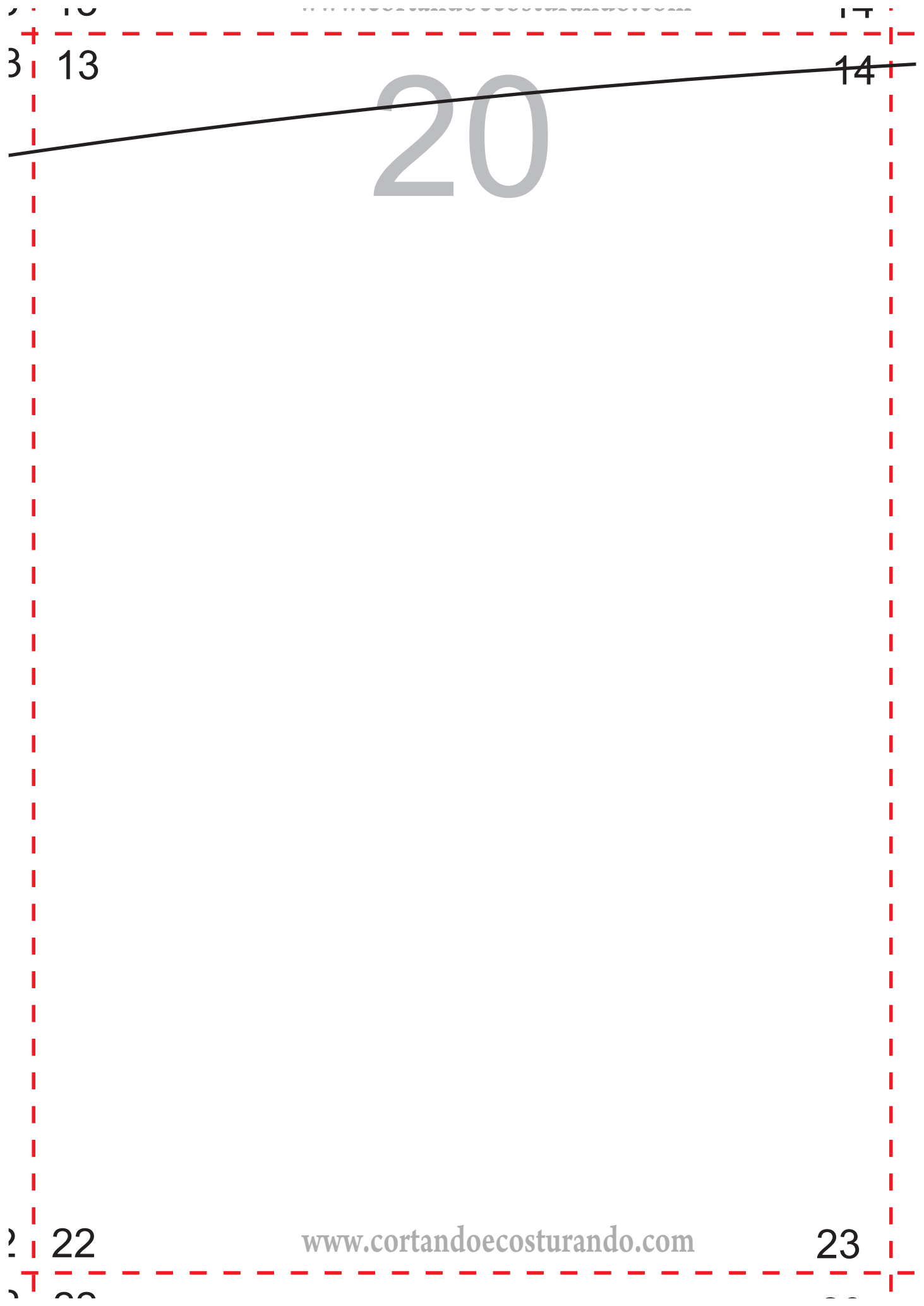
12

13

19

21

22



20

3 13

14

2 22

23

14

15

21

23

24



19

20

22



28

29

) 20

21

23

29

30

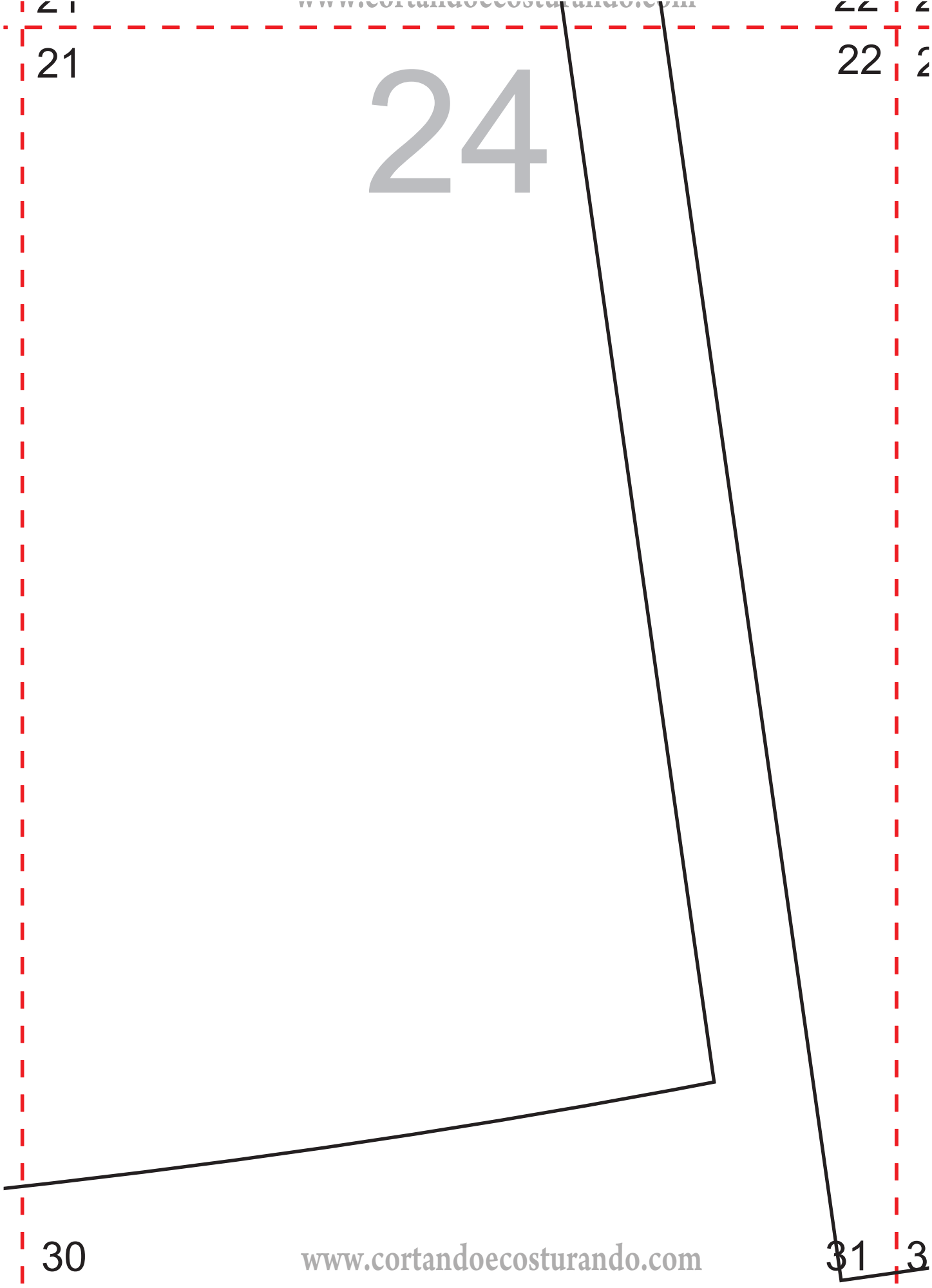
21

22

21

22

24

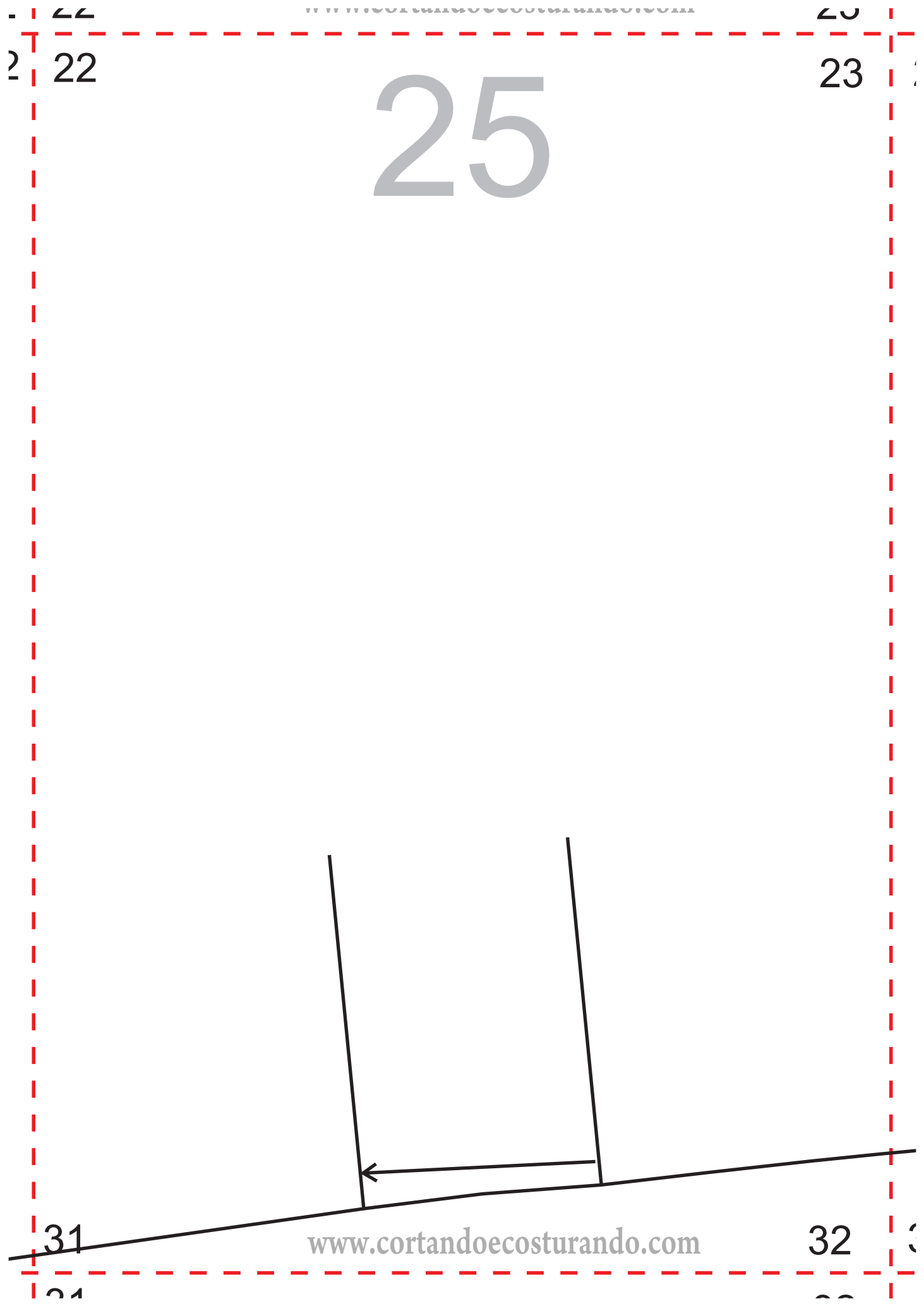


30

31

30

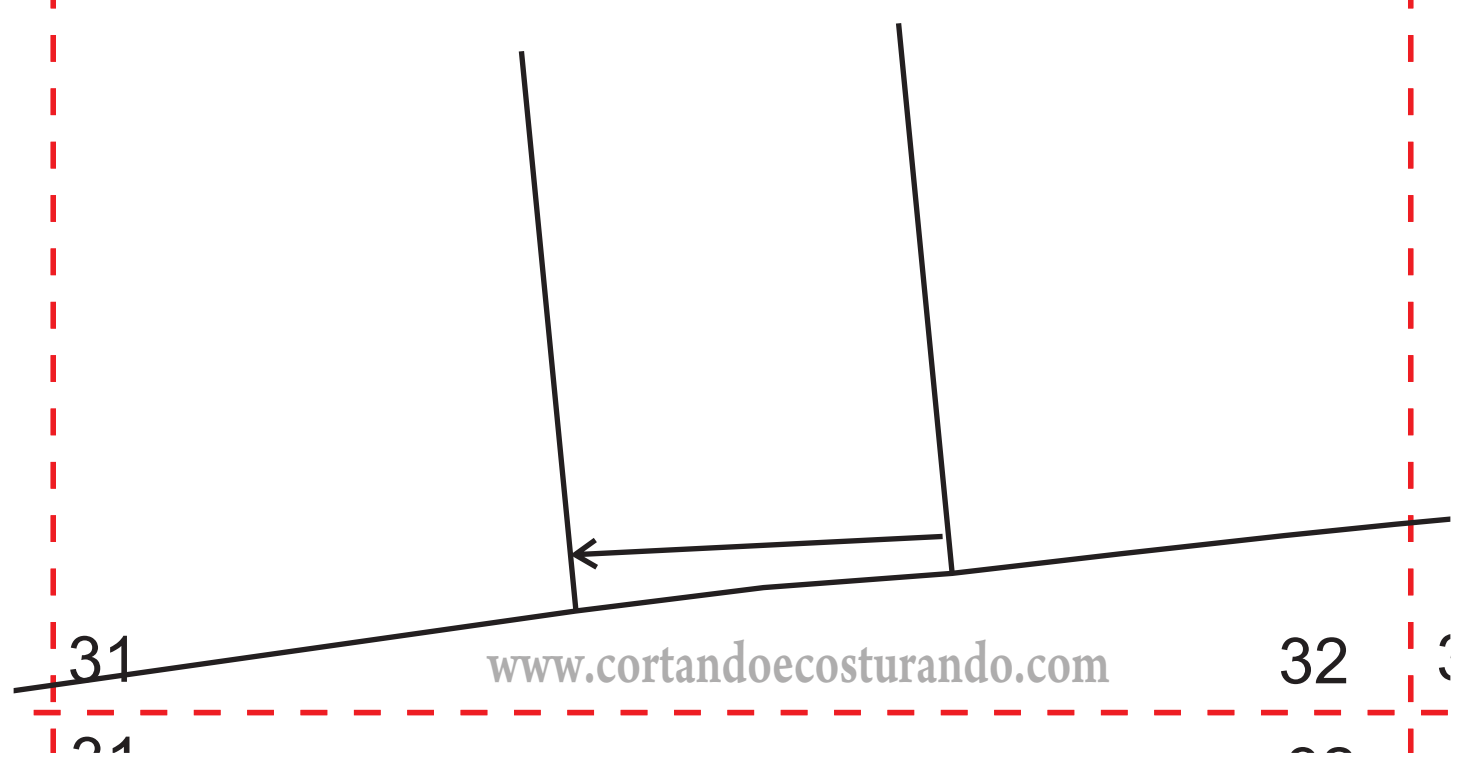
31



22

23

25



31

32

23

24

26

Meio das Costas



32

33