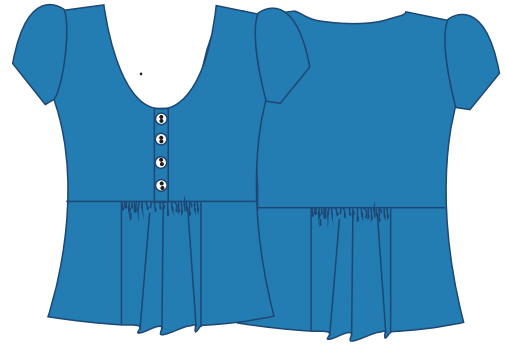
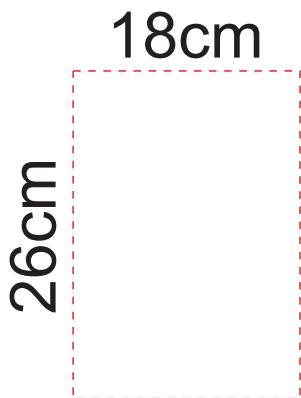


# Bata - manequim 42

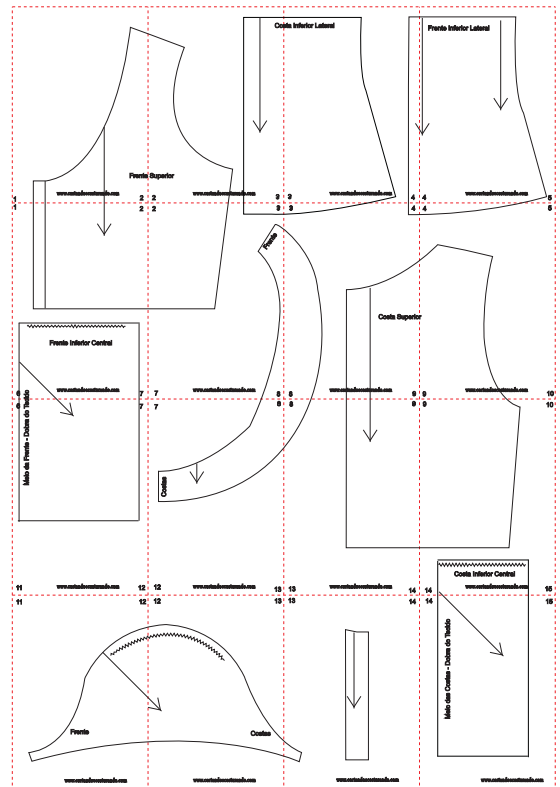
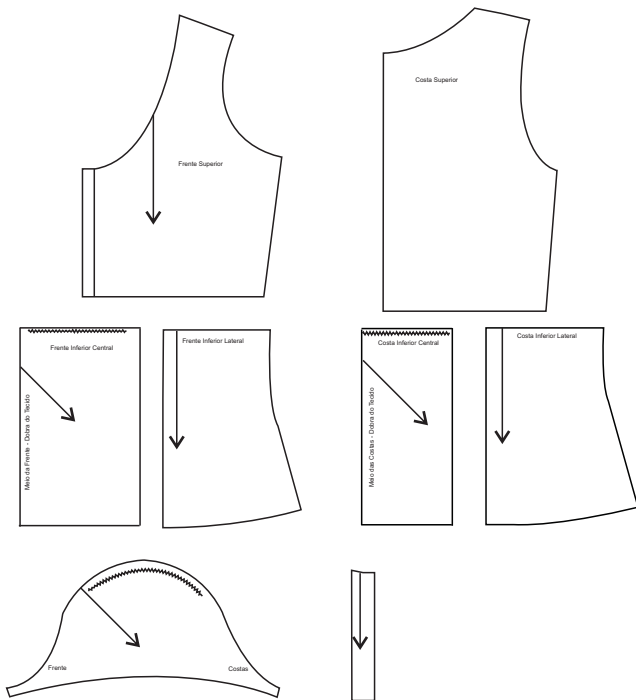
Tecido - Tricoline



Após a impressão a grade deverá ter:  
18cm de largura por 26cm de altura.



Recortar na linha tracejada e colar conforme numeração.



Acabamento do Decote



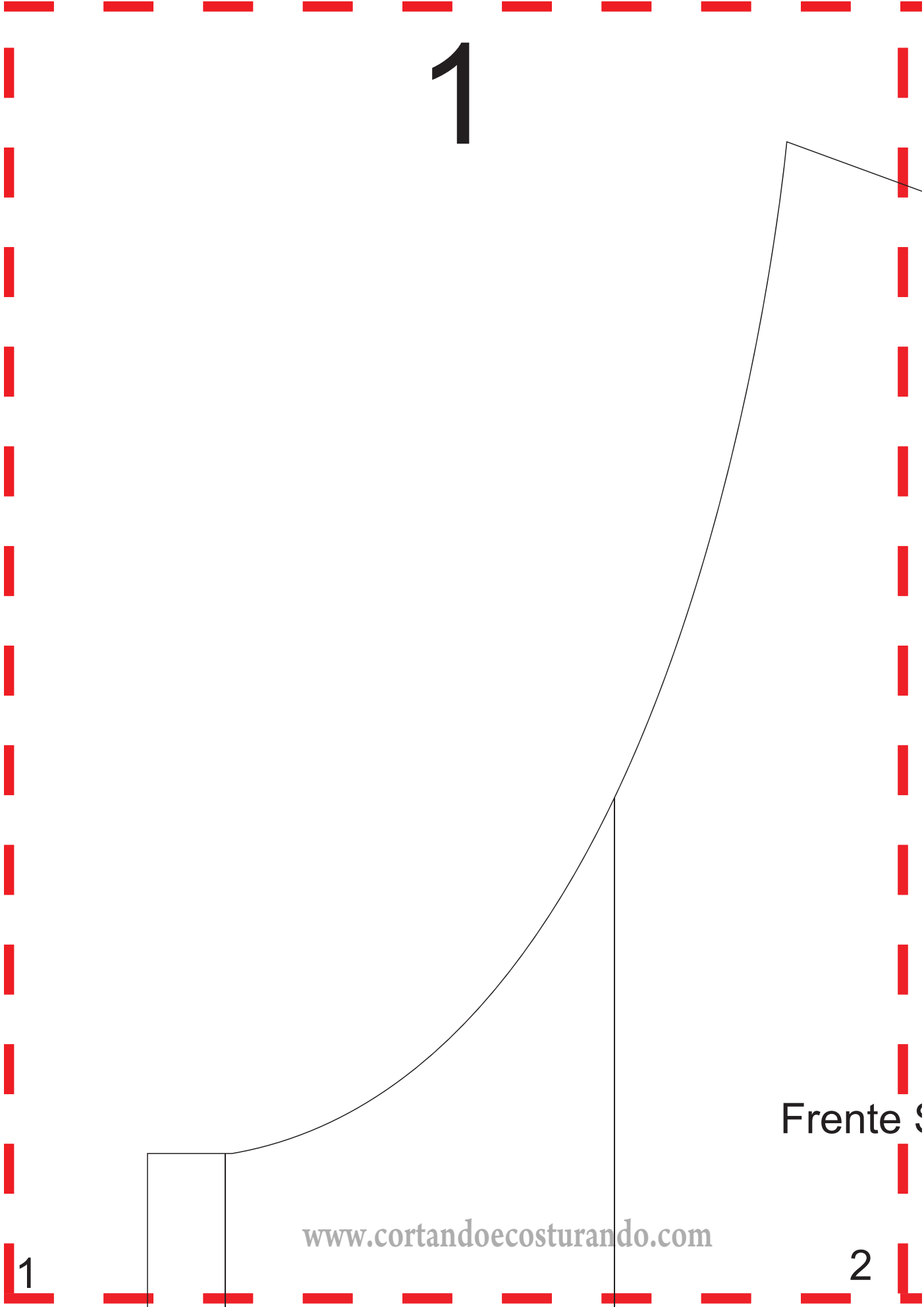
1

Frente 3

[www.cortandoeocosturando.com](http://www.cortandoeocosturando.com)

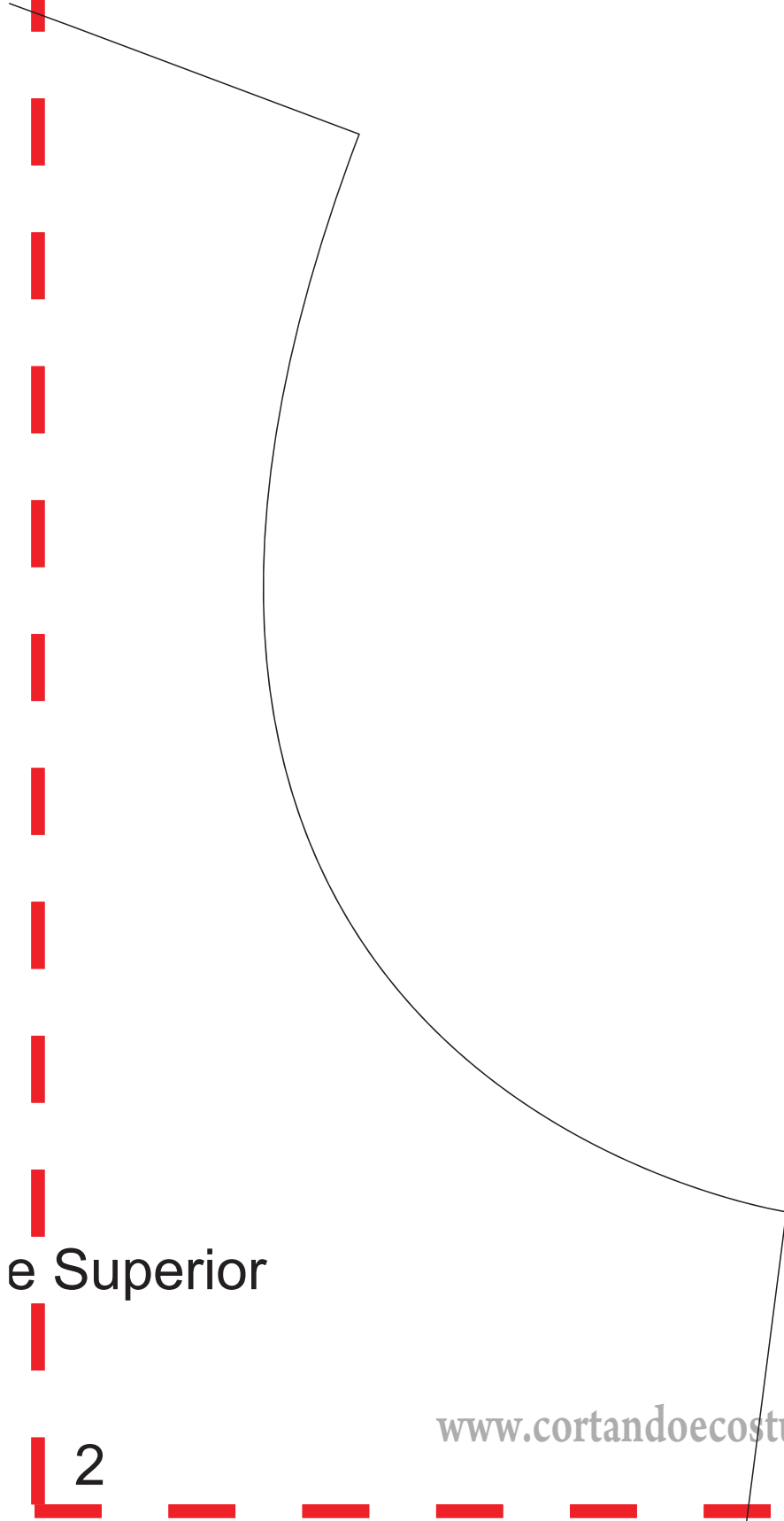
1

2



2

Cos'



e Superior

2

[www.cortandoecosturando.com](http://www.cortandoecosturando.com)

3

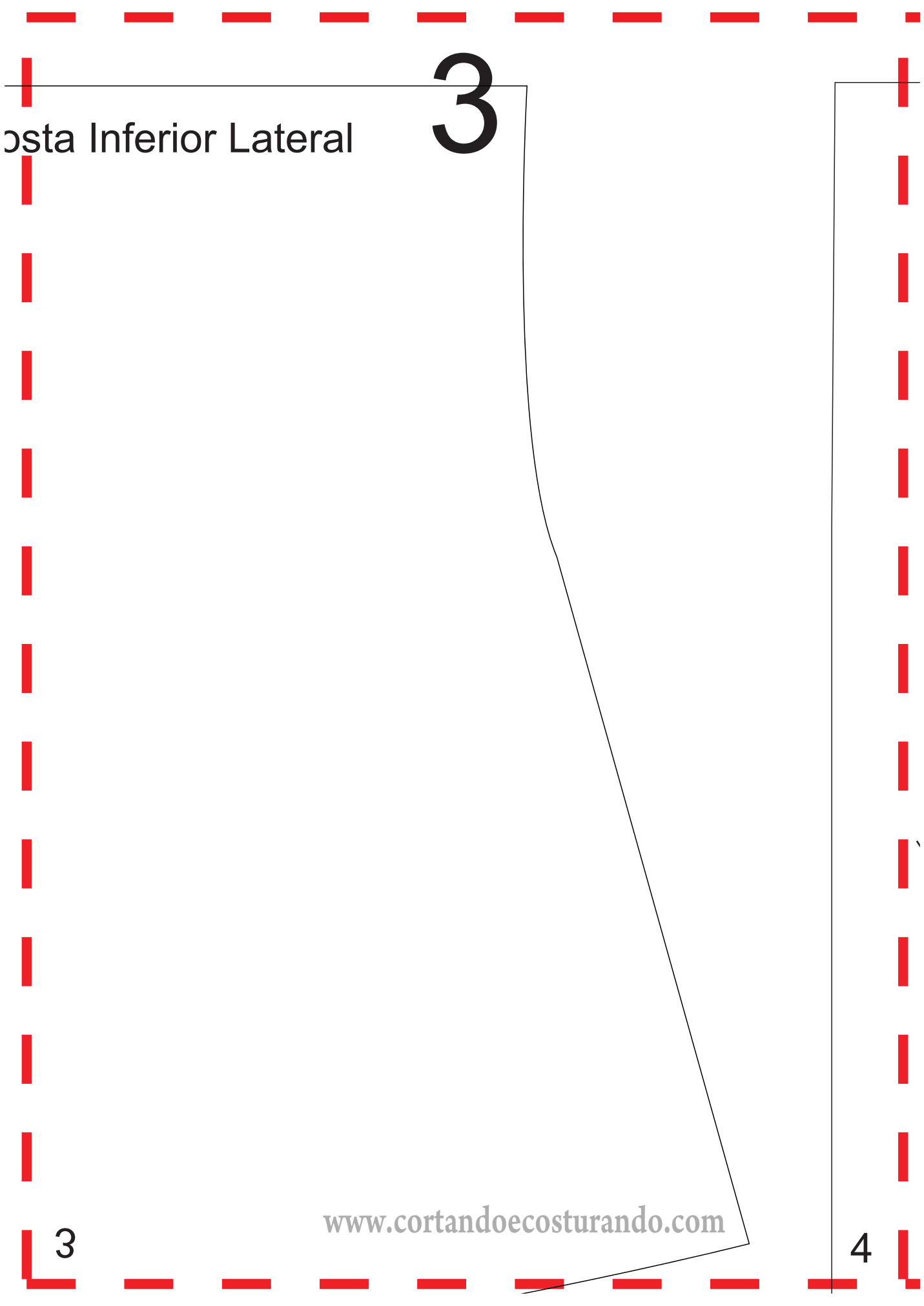
Costa Inferior Lateral

3

3

[www.cortandoeocosturando.com](http://www.cortandoeocosturando.com)

4

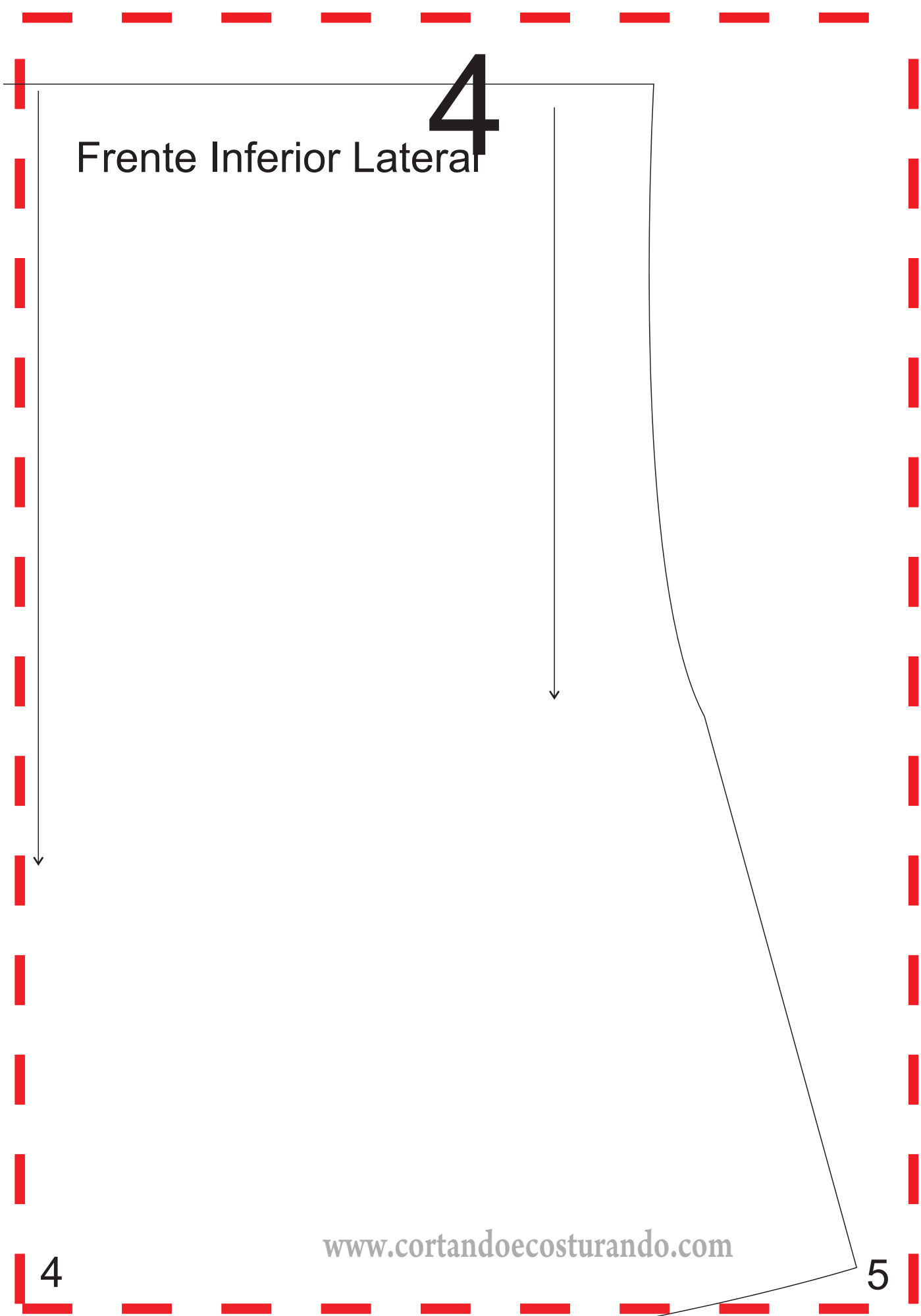


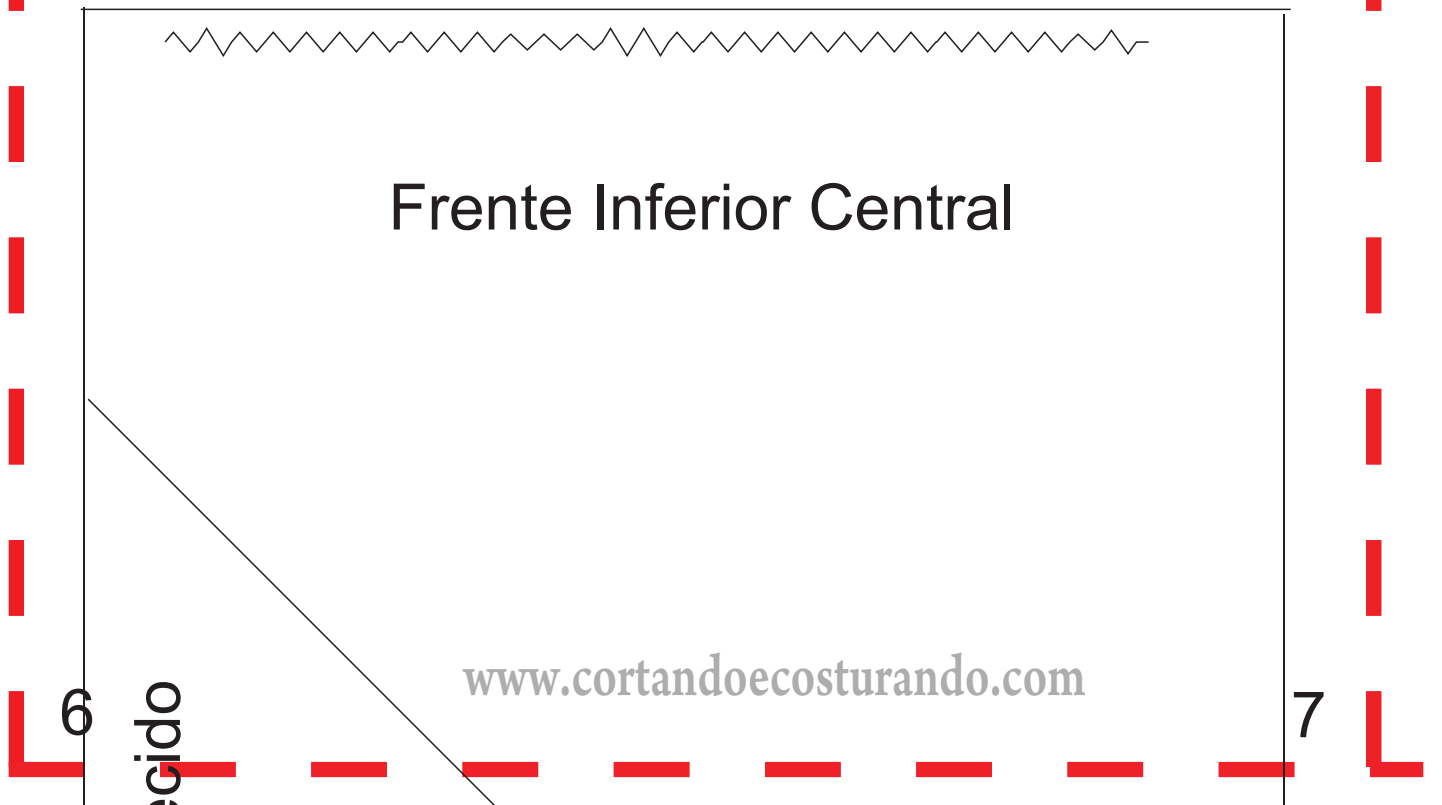
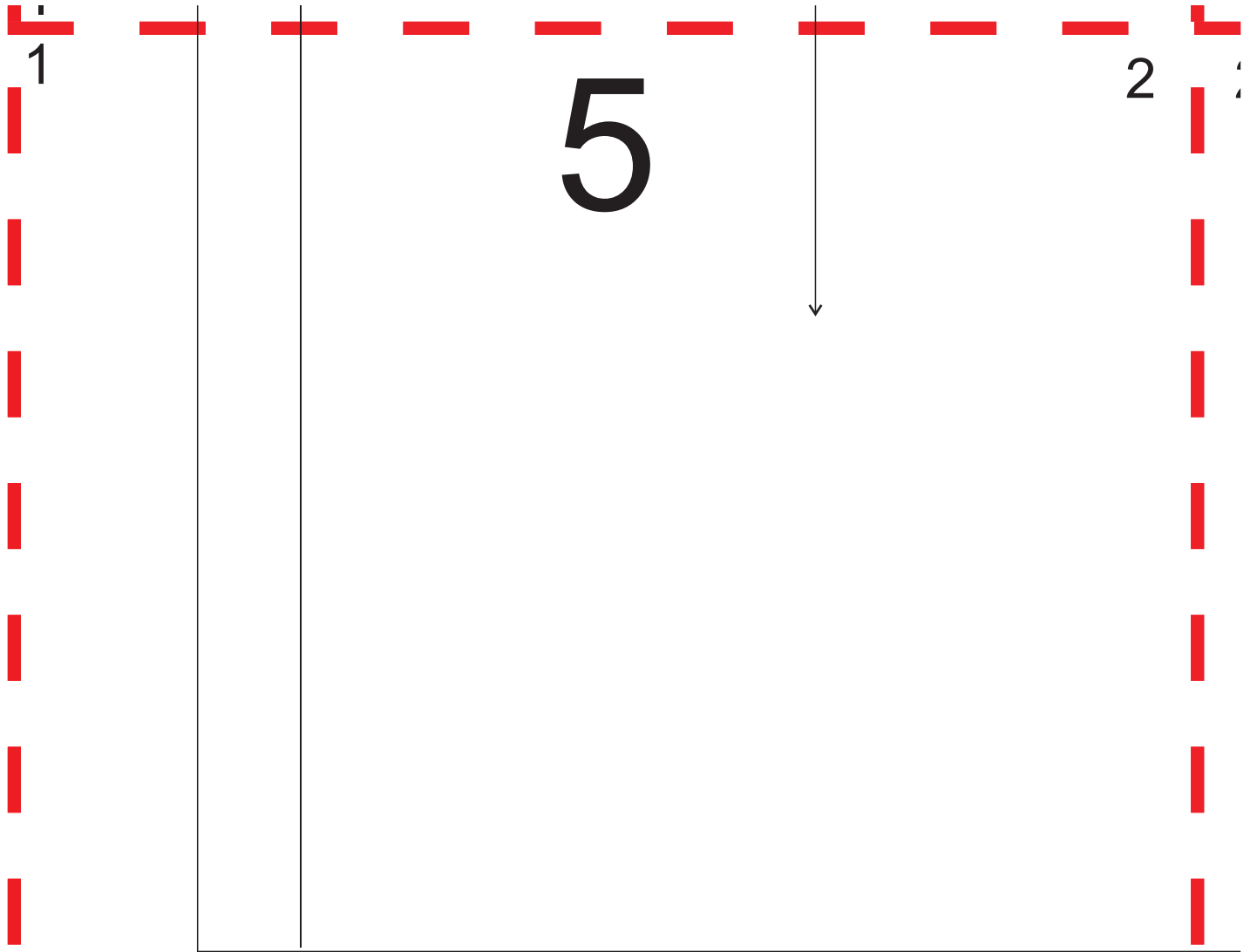
4

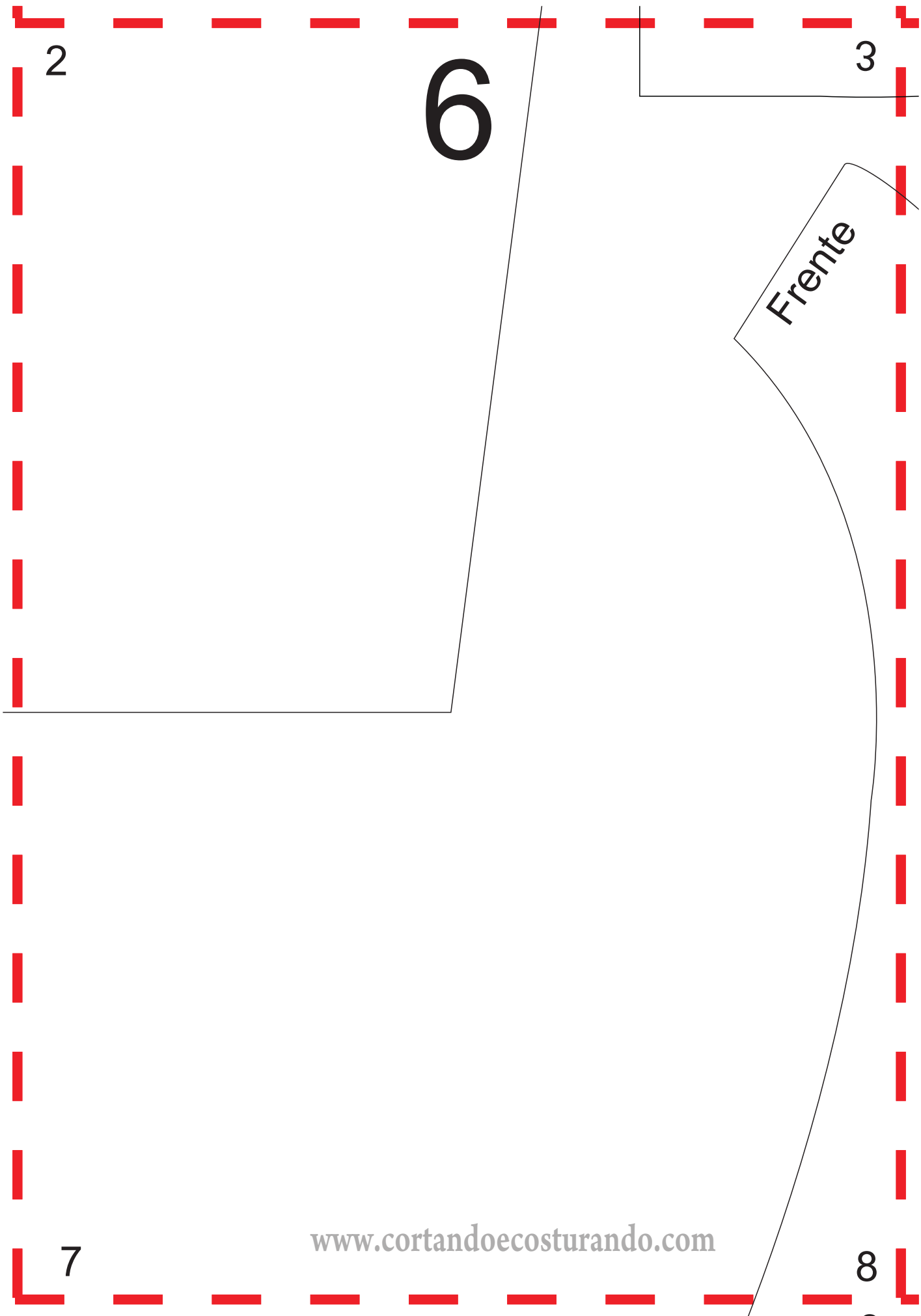
Frente Inferior Lateral

4

5







2

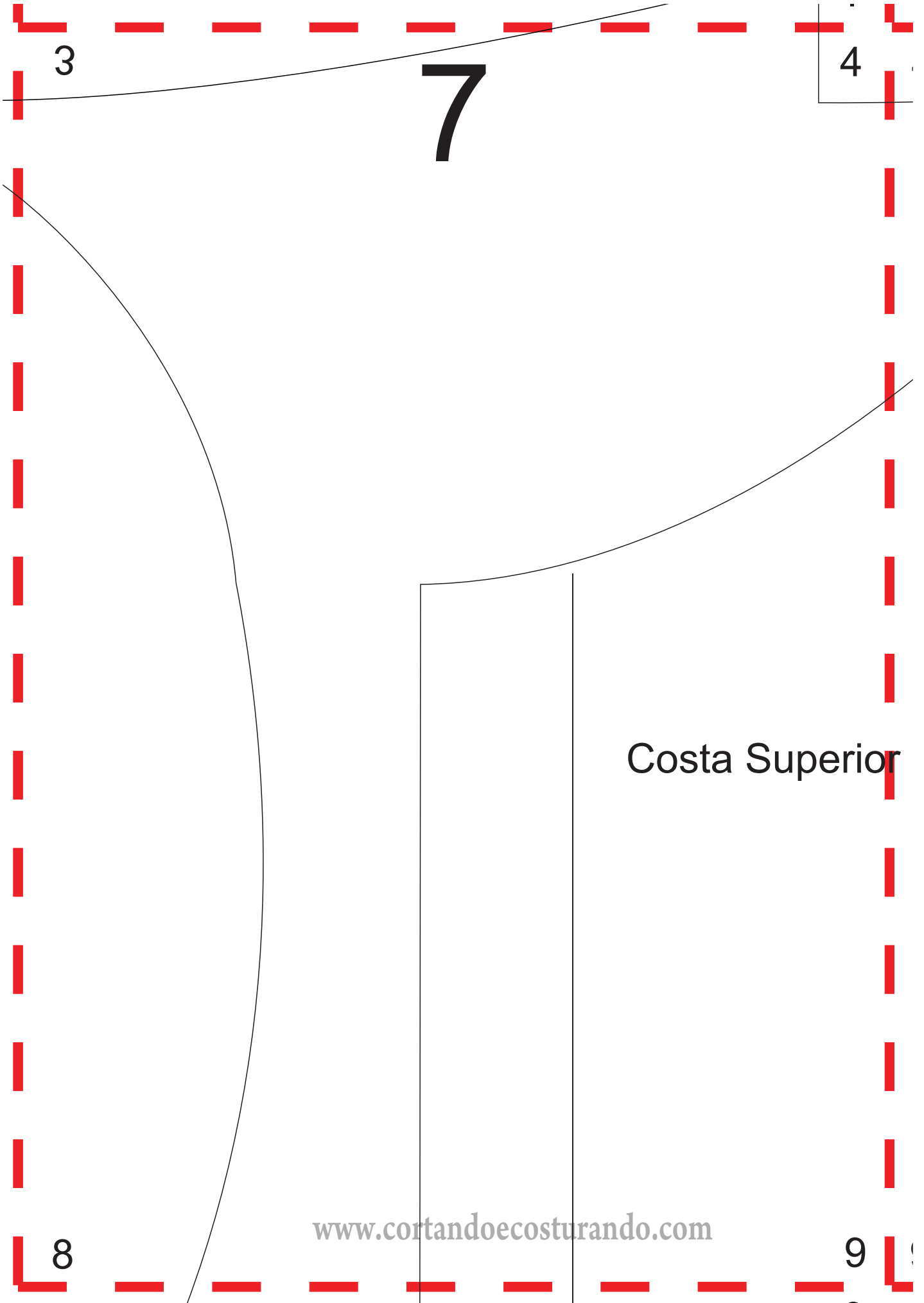
6

3

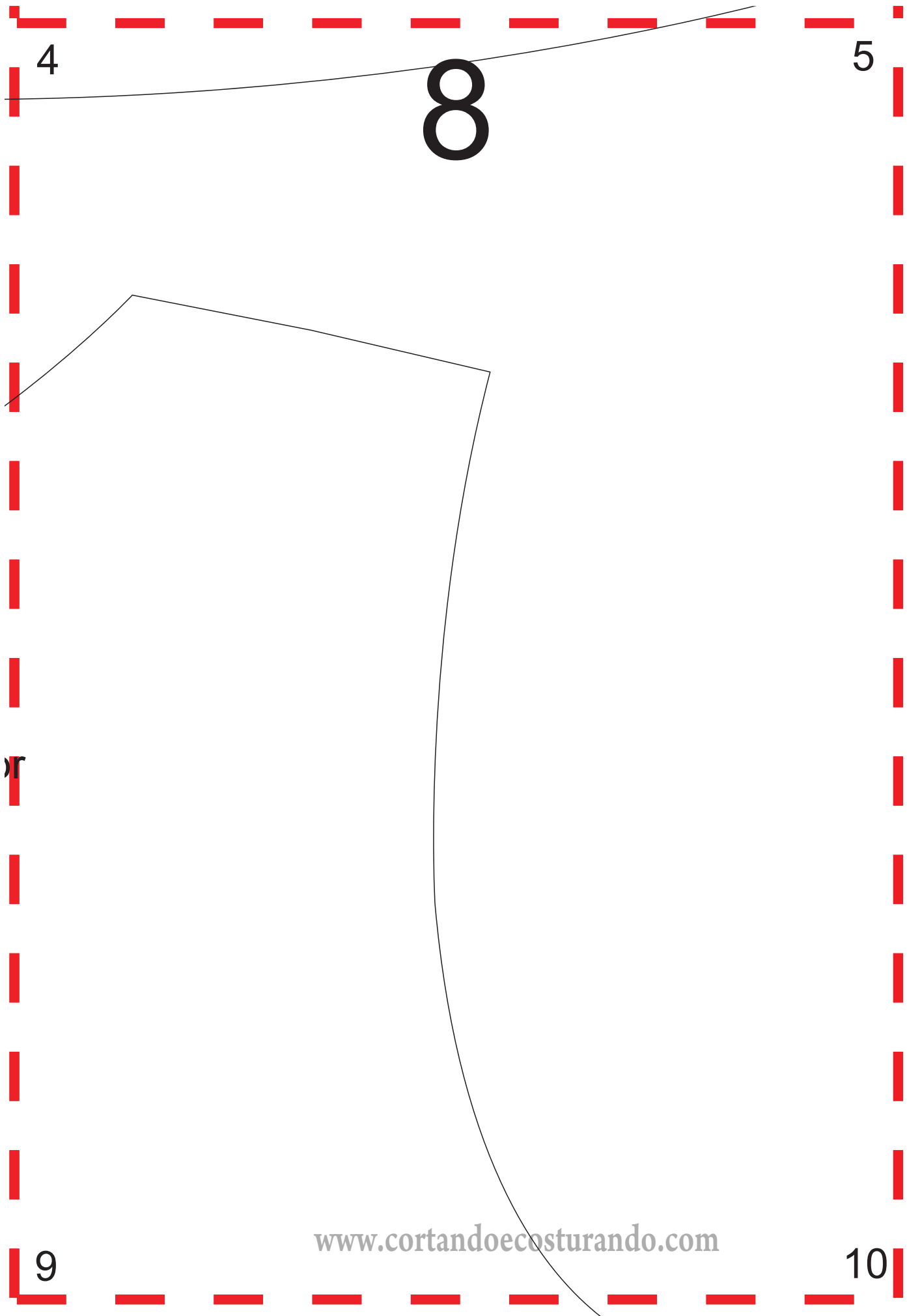
Frente

7

8







Meio da Frente - Dobra do Tecido

6

7

9

11

12

7

# 10

8

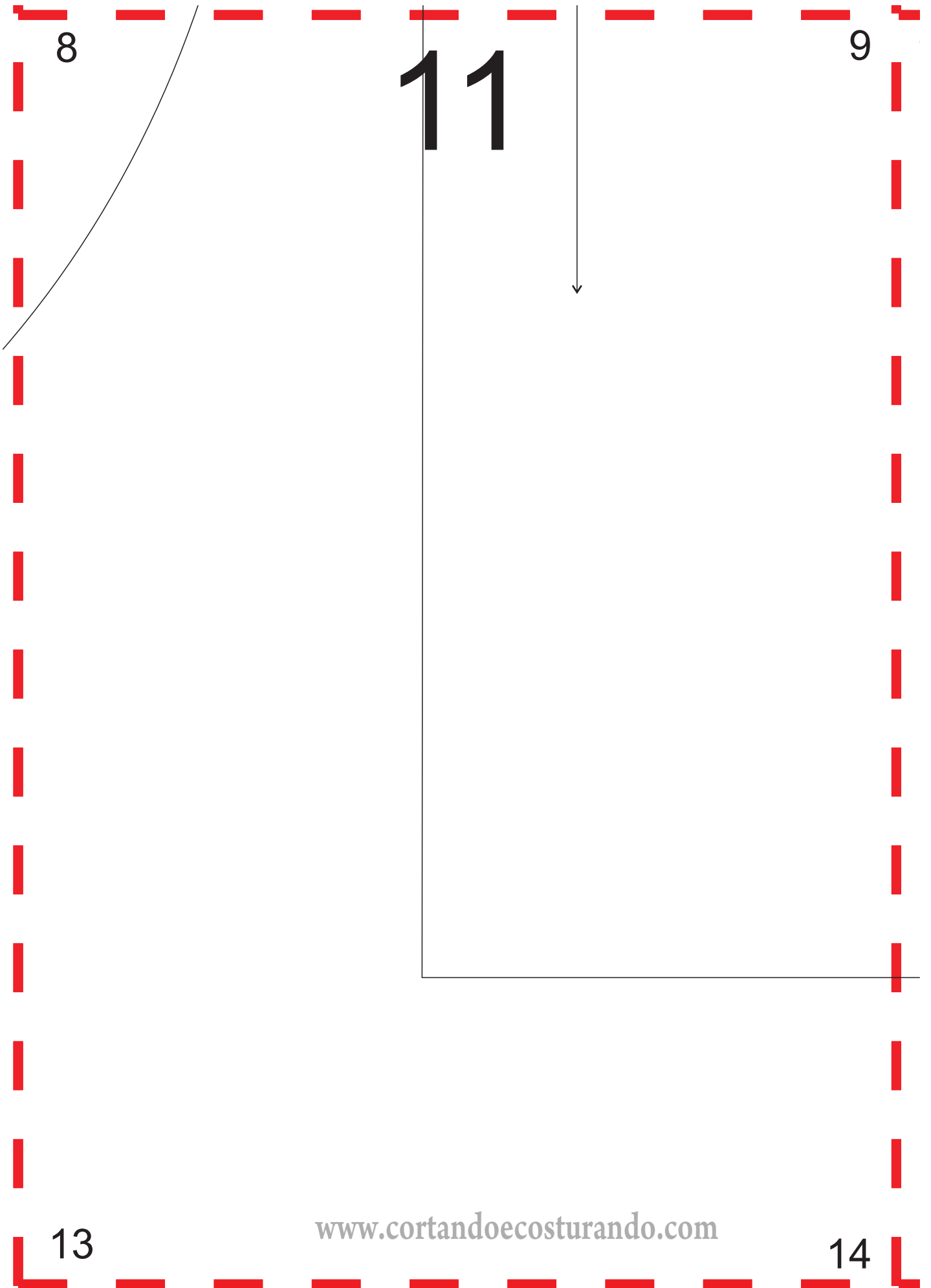
Costas



12

[www.cortandoeocosturando.com](http://www.cortandoeocosturando.com)

13



9

12

10

Costa Inferior Central

[www.cortandoecosturando.com](http://www.cortandoecosturando.com)

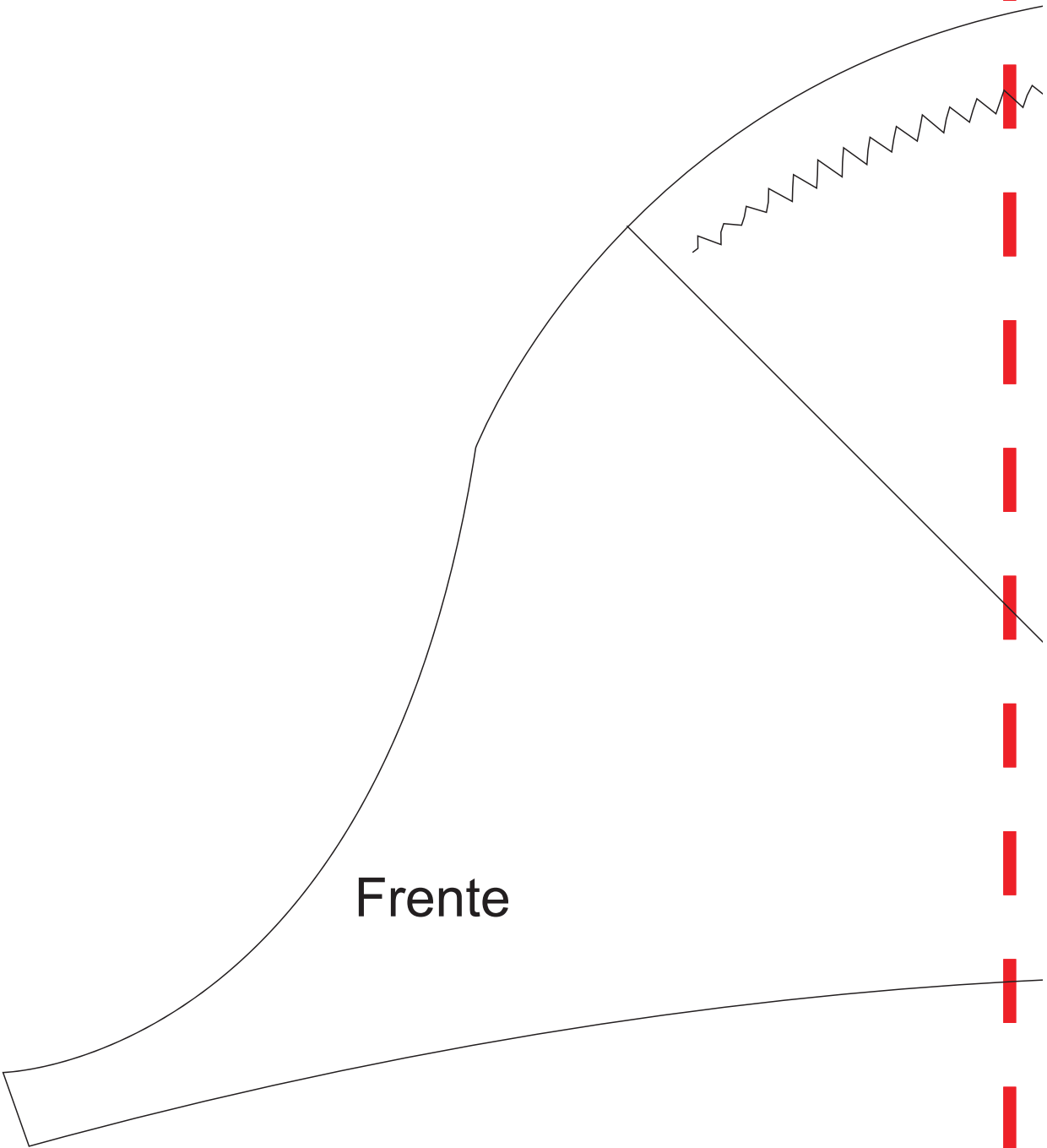
14

15

11

# 13

12



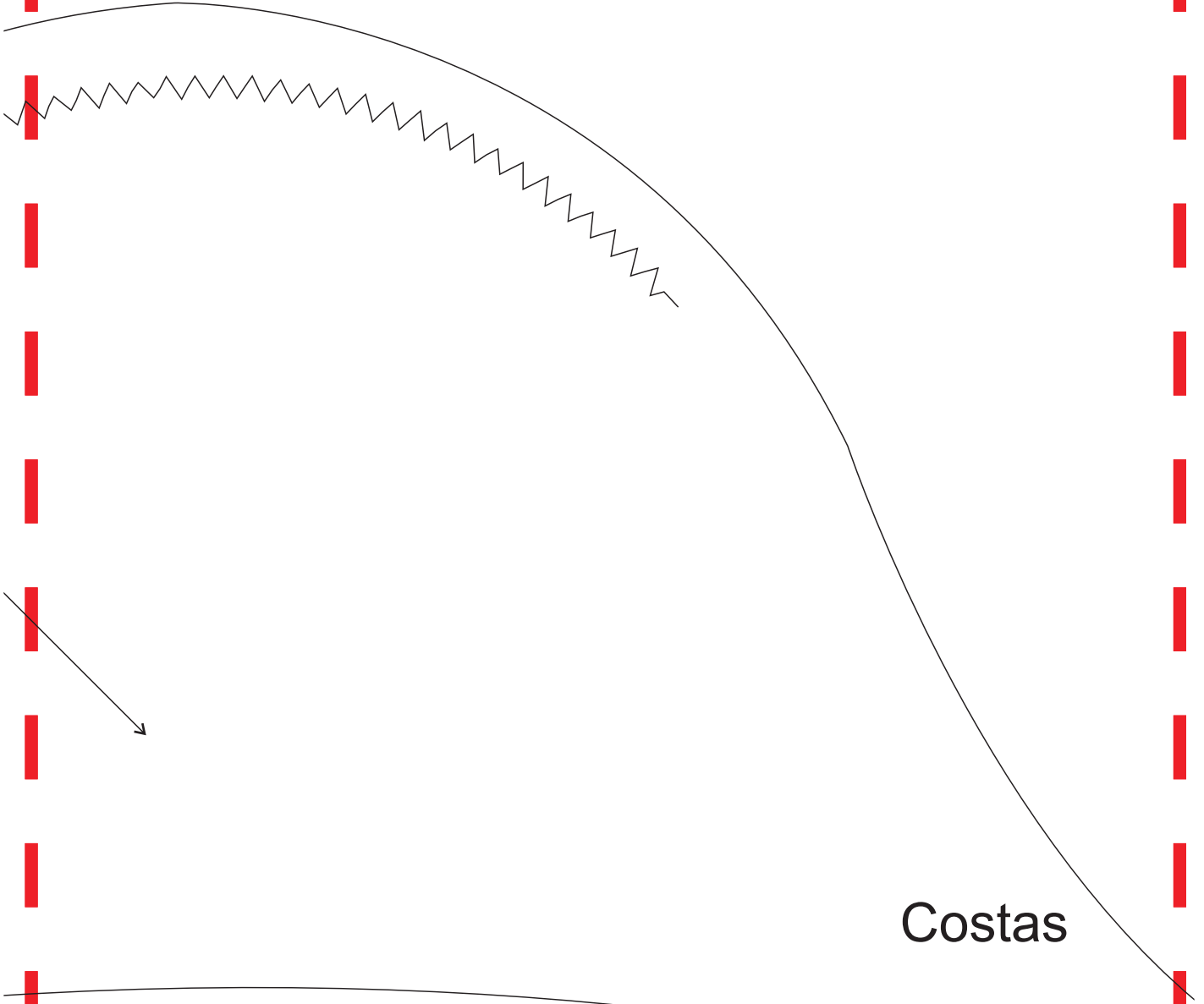
Frente

2

12

14

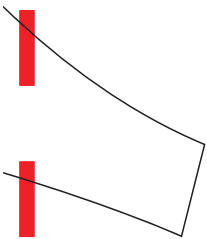
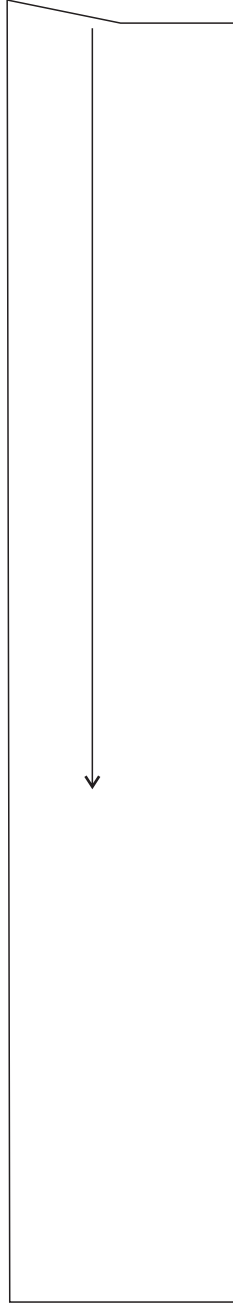
13



13

# 15

14





14

16

15

Meio das Costas - Dobra do Tecido